

STONE PROJECT/

GRES PORCELLANATO A TUTTO SPESSORE
 FULL BODY PORCELAIN TILE
 GRÈS CÉRAME PLEINE MASSE
 DURCHGEFÄRBTES FEINSTEINZEUG
 GRES PORCELÁNICO A TODA MASA
 ПОЛНОТЕЛЫЙ КЕРАМОГРАНИТ
 通体瓷质砖

ISO 13006 - G - B1a UGL (E ≤ 0,5%) UNI EN 14411 - G -



BRERA

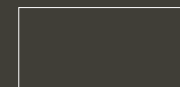
COLOMBINO

SKIFER

OCEANBLACK



120X120 / 48"X48"



60X120 / 24"X48"



60X60 / 24"X24"



30X60 / 12"X24"



GRES PORCELLANATO A TUTTO SPESSORE / FULL BODY PORCELAIN TILE / GRÉS CÉRAME PLEINE MASSE / DURCHGEFÄRBTES FEINSTEINZEUG
GRES PORCELÁNICO A TODA MASA / ПОЛНОТЕЛЫЙ КЕРАМОГРАНИТ / 通体瓷质砖

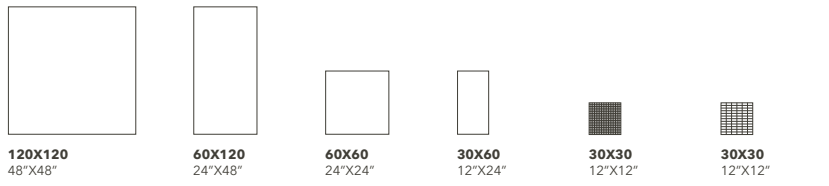
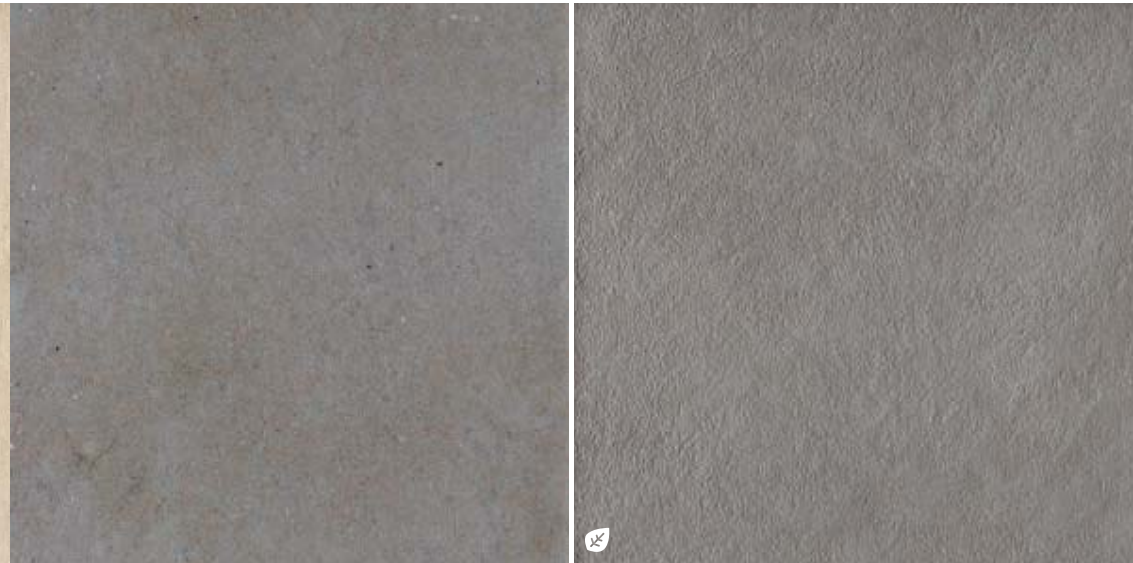
ISO 13006 - G - Bla UGL (E ≤ 0,5%) UNI EN 14411 - G -



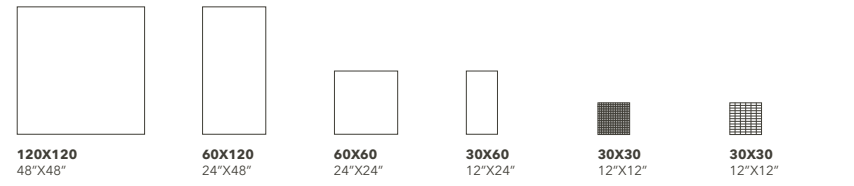
BRERA



COLOMBINO



LI	N	○	■	BRERA 120	BRERA 12	BRERA 60	BRERA 36	MK.BRERA
LI	L	⊗	■	BRERA 120L	BRERA 12L	BRERA 60L	BRERA 36L	MK.BRERA 30L
RB	N	○	■		BRERA RB60	BRERA RB36		



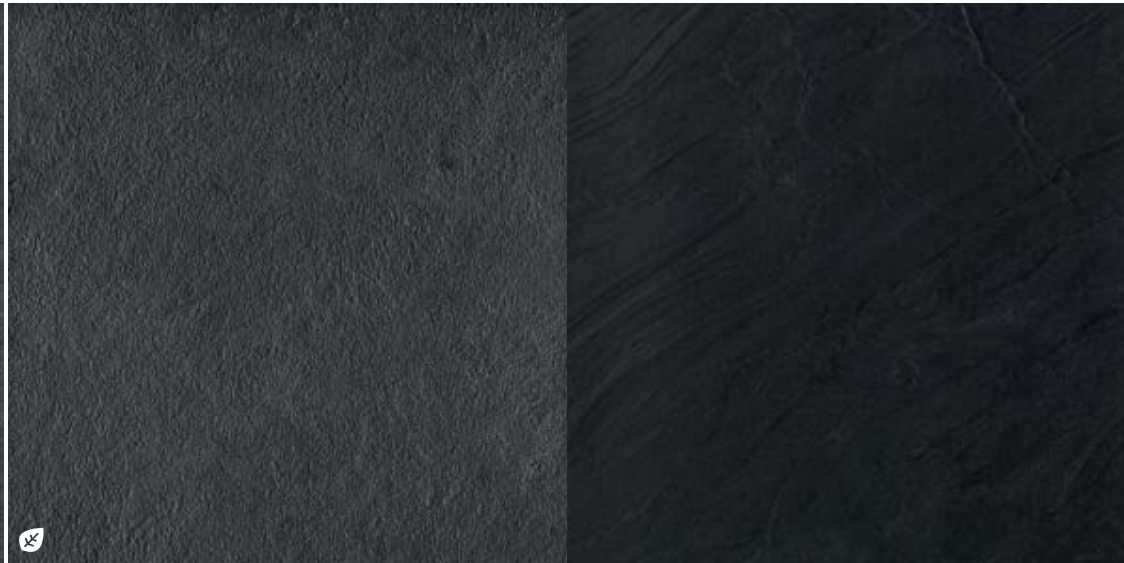
LI	N	○	■	COLOMBINO 120	COLOMBINO 12	COLOMBINO 60	COLOMBINO 36	MK.COLOMBINO
LI	LP	⊗	■	COLOMBINO 120LP	COLOMBINO 12LP	COLOMBINO 60LP	COLOMBINO 36LP	MK.COLOMB 30LP
RB	N	○	■		COLOMBINO RB60	COLOMBINO RB36		

GRES PORCELLANATO A TUTTO SPESSORE / FULL BODY PORCELAIN TILE / GRÉS CÉRAME PLEINE MASSE / DURCHGEFÄRBTES FEINSTEINZEUG
GRES PORCELÁNICO A TODA MASA / ПОЛНОТЕЛЫЙ КЕРАМОГРАНИТ / 通体瓷质砖

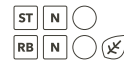
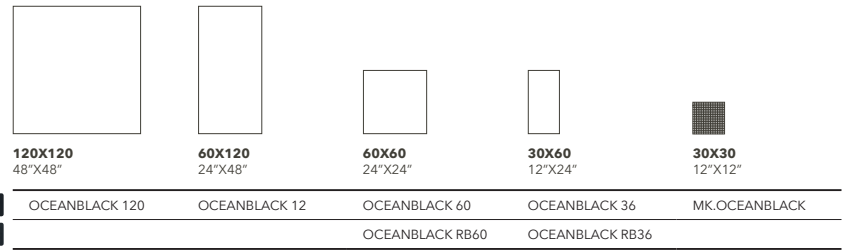
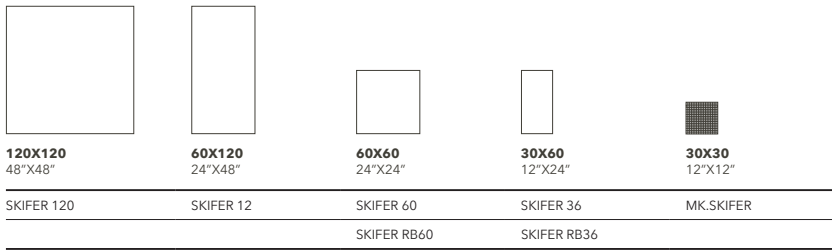
ISO 13006 - G - Bla UGL (E ≤ 0,5%) UNI EN 14411 - G -



SKIFER



OCEANBLACK



GRES PORCELLANATO A TUTTO SPESSORE / FULL BODY PORCELAIN TILE / GRÉS CÉRAME PLEINE MASSE / DURCHGEFÄRBTES FEINSTEINZEUG
GRES PORCELÁNICO A TODA MASA / ПОЛНОТЕЛЫЙ КЕРАМОГРАНИТ / 通体瓷质砖

ISO 13006 - G - Bla UGL (E ≤ 0,5%) UNI EN 14411 - G -

Elementi decorativi / Decorative elements / Éléments décoratifs / Dekorations-Elemente
Elementos decorativos / Декоративные элементы / 装饰元素

LI N ○



MU.BRERA 36
30X60 / 12"X24"



MU.COLOMB 36
30X60 / 12"X24"

ST N ○



MU.SKIFER 36
30X60 / 12"X24"



MU.OCEANBL 36
30X60 / 12"X24"

RB N ○



MU.BRERA RB36
30X60 / 12"X24"



MU.COLOMB RB36
30X60 / 12"X24"



MU.SKIFER RB36
30X60 / 12"X24"



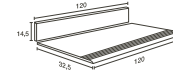
MU.OCEANBL RB36
30X60 / 12"X24"

Pezzi speciali / Trims / Pièces spéciales / Sonderstücke
Piezas especiales / Специальные элементы / 特制件

LI N ○



9,5X60 △
3.7"X24"



60X120 △
24"X48"



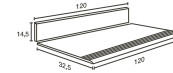
120X32,5 △
48"X12.8"

BRERA	BRERA BT60	BRERA KIT	BRERA G120
COLOMBINO	COLOMBINO BT60	COLOMBINO KIT	COLOMBINO G120

ST N ○



9,5X60 △
3.7"X24"



60X120 △
24"X48"



120X32,5 △
48"X12.8"

SKIFER	SKIFER BT60	SKIFER KIT	SKIFER G120
OCEANBLACK	OCEANBLACK BT60	OCEANBLACK KIT	OCEANBLACK G120

ARTICOLO	DIN 51130 (R)	DIN 51097 (A+B+C)	BCR REP.CEC 6/81		DM 14/6/89 N.236		PENDULUM TEST BS (INGLESE)	PENDULUM TEST AS/NZS 4856:2004 (AUSTRALIANO)	PENDULUM TEST UNE ENV 12633:2003 (SPAGNOLO)	BOT 3000 (DCOF) average value
			g.a.	g.b.	c.a.	g.b.				
BRERA	R10	A	> 0,4	> 0,4	> 0,4	> 0,4	> 36	> 35	3	0.43
COLOMBINO									2	
SKIFER									1	
OCEANBLACK									1	
BRERA RB	R11	A+B	> 0,4	> 0,4	> 0,4	> 0,4	> 36	> 35	2	0.51
COLOMBINO RB									3	
SKIFER RB									2	
OCEANBLACK RB									1	