

EFFETTO MARMO



FLOOR: Lincoln **JL 04** 1200x1200 / 48"x48" LUC RECT  
WALL: Lincoln **JL 04** 1200x2780 / 48"x110" LUC RECT + NORR Grå **RR 02** 1200x2780 / 48"x110" NAT RECT

# JOLIE

**Jolie is an anthology of iconic marble effects in porcelain stoneware.**

Rare and pure references, where every vein and every single slab are carefully selected to create a precious and timeless style. 7 colors that can be used for floors and walls, but also furnishings and finishes, to create and design any type of style and environment.



Calacatta Vena Antica **JL 03** 1200x1200 / 48"x48" LUC RECT

**COLORI**

Colours | Farben | Couleurs | Colores | Цветов | 种颜色



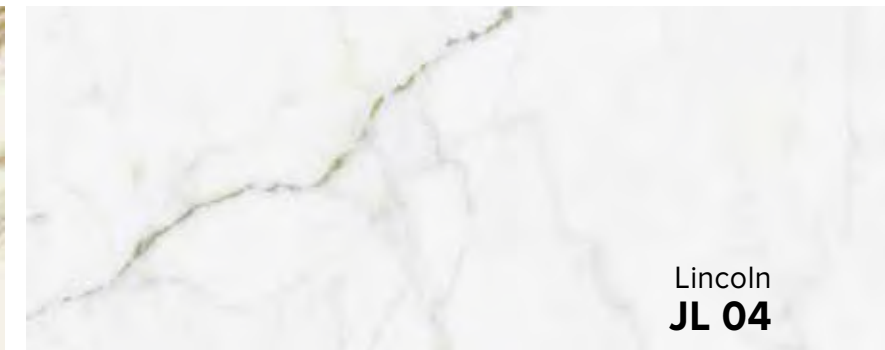
Statuario Fine  
**JL 01**



Calacatta Select  
**JL 02**



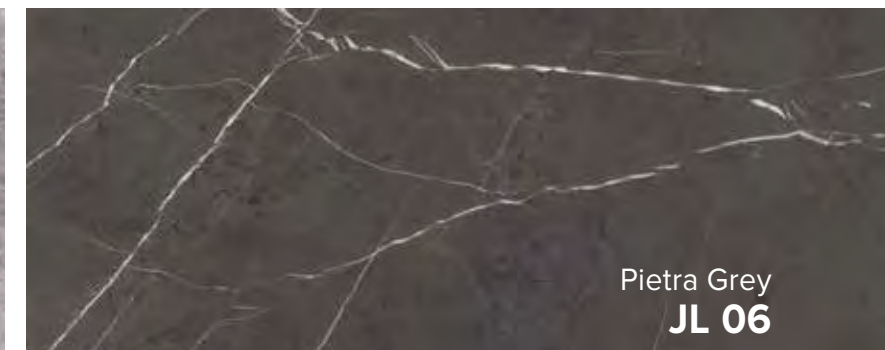
Calacatta Vena Antica  
**JL 03**



Lincoln  
**JL 04**



Tundra Lite  
**JL 05**



Pietra Grey  
**JL 06**



Verde Alpi  
**JL 07**

WALL AND COUNTER: Pietra Grey **JL 06** 1200x2780 / 48"x110" SP RECT  
FLOOR: ELYSIAN Travertino Light **EY 07** 1200x1200 / 48"x48" SP RECT



WALL: Pietra Grey **JL 06** 1200x2780 / 48"x110" SP RECT + WANDERLUST Agata Multicolor **WA 09** 1200x2780 / 48"x110" LUC RECT  
FLOOR: JURUPA Wild **JP 05** 200x1200 / 8"x48" NAT RECT  
VANITY UNIT: BATHMOOD Glad Pietra Grey **JL 06** SP  
SEAT: BATHMOOD Stay Agata Multicolor **WA 09** LUC



WALL: Statuario Fine **JL 01** 1200x2780 / 48"x110" LUC RECT Vein Matching  
FLOOR: Statuario Fine **JL 01** 1200x1200 / 48"x48" LUC RECT  
TABLE: WANDERLUST Galway Green **WA 12** LUC

**COLORI**

Colours | Farben | Couleurs | Colores | Цветов | 种颜色

STATUARIO FINE **JL 01**



	<b>Formati Nominali</b> Nominal Sizes		<b>Superficie</b> Finish		<b>Spessore mm</b> Thickness mm
	800x800 / 31½"x31½"		LUC / SP RECT		9
	800x1600 / 31½"x63"		LUC / SP RECT		9
	600x1200 / 48"x48"		LUC RECT		9
	1200x1200 / 48"x48"		LUC / SP RECT		9
	1200x2780 / 48"x110"		LUC / SP RECT		6
	<b>Stucchi consigliati</b> Recommended grouts				
	KERAKOLL		02		
	MAPEI		103 Bianco Luna		
	LATICRETE		50 Sea Glass		

LINCOLN **JL 04**



	<b>Formati Nominali</b> Nominal Sizes		<b>Superficie</b> Finish		<b>Spessore mm</b> Thickness mm
	800x800 / 31½"x31½"		LUC / SP RECT		9
	800x1600 / 31½"x63"		LUC / SP RECT		9
	600x1200 / 48"x48"		LUC RECT		9
	1200x1200 / 48"x48"		LUC / SP RECT		9
	1200x2780 / 48"x110"		LUC / SP RECT		6
	Line 1200x2780 / 48"x110"		SP RECT		6
	<b>Stucchi consigliati</b> Recommended grouts				
	KERAKOLL		02		
	MAPEI		103 Bianco Luna		
	LATICRETE		50 Sea Glass		

CALACATTA SELECT **JL 02**



	<b>Formati Nominali</b> Nominal Sizes		<b>Superficie</b> Finish		<b>Spessore mm</b> Thickness mm
	800x800 / 31½"x31½"		LUC / SP RECT		9
	800x1600 / 31½"x63"		LUC / SP RECT		9
	600x1200 / 48"x48"		LUC RECT		9
	1200x1200 / 48"x48"		LUC / SP RECT		9
	1200x2780 / 48"x110"		LUC / SP RECT		6
	<b>Stucchi consigliati</b> Recommended grouts				
	KERAKOLL		02		
	MAPEI		103 Bianco Luna		
	LATICRETE		50 Sea Glass		

TUNDRA LITE **JL 05**



	<b>Formati Nominali</b> Nominal Sizes		<b>Superficie</b> Finish		<b>Spessore mm</b> Thickness mm
	800x800 / 31½"x31½"		LUC / SP RECT		9
	800x1600 / 31½"x63"		LUC / SP RECT		9
	600x1200 / 48"x48"		LUC RECT		9
	1200x1200 / 48"x48"		LUC / SP RECT		9
	1200x2780 / 48"x110"		LUC / SP RECT		6
	<b>Stucchi consigliati</b> Recommended grouts				
	KERAKOLL		08		
	MAPEI		113 Grigio Cemento		
	LATICRETE		78 Sterling Silver		

CALACATTA VENA ANTICA **JL 03**



	<b>Formati Nominali</b> Nominal Sizes		<b>Superficie</b> Finish		<b>Spessore mm</b> Thickness mm
	800x800 / 31½"x31½"		LUC RECT		9
	800x1600 / 31½"x63"		LUC RECT		9
	600x1200 / 48"x48"		LUC RECT		9
	1200x1200 / 48"x48"		LUC RECT		9
	1200x2780 / 48"x110"		LUC RECT		6
	<b>Stucchi consigliati</b> Recommended grouts				
	KERAKOLL		24		
	MAPEI		103 Bianco Luna		
	LATICRETE		50 Sea Glass		

PIETRA GREY **JL 06**



	<b>Formati Nominali</b> Nominal Sizes		<b>Superficie</b> Finish		<b>Spessore mm</b> Thickness mm
	800x800 / 31½"x31½"		LUC / SP RECT		9
	800x1600 / 31½"x63"		LUC / SP RECT		9
	600x1200 / 48"x48"		LUC RECT		9
	1200x1200 / 48"x48"		LUC / SP RECT		9
	1200x2780 / 48"x110"		LUC / SP RECT		6
	<b>Stucchi consigliati</b> Recommended grouts				
	KERAKOLL		11		
	MAPEI		114 Antracite		
	LATICRETE		45 Raven		

**COLORI**

Colours | Farben | Couleurs | Colores | Цветов | 种颜色

VERDE ALPI **JL 07**



Formati Nominali Nominal Sizes	Superficie Finish	Spessore mm Thickness mm
600x1200 / 48"x48"	LUC RECT	9
1200x1200 / 48"x48"	LUC RECT	9
1200x2780 / 48"x110"	LUC RECT	6

Stucchi consigliati Recommended grouts		
KERAKOLL	11	
MAPEI	114 Antracite	
LATICRETE	45 Raven	



RIASSUNTIVO FORMATI ED IMBALLI

Summary of sizes and packaging | Übersicht über Formate und Verpackungen | Récapitulatif formats et emballages  
Sinóptico de formatos y embalajes | Краткая информация о форматах и упаковках | 规格和包装概述

		± 9 mm							
Formati Nominali Nominal Sizes		800x800 31½"x31½"		800x1600 31½"x63"		600x1200 24"x48"		1200x1200 48"x48"	
Tutti i formati sono rettificati.   All sizes are rectified.									
Superficie Finish		LUC	SP	LUC	SP	LUC	LUC	SP	
	STATUARIO FINE JL 01	V2	■	■	■	■	■	■	■
	CALACATTA SELECT JL 02	V2	■	■	■	■	■	■	■
	CALACATTA VENA ANTICA JL 03	V2	■	-	■	-	■	■	-
	LINCOLN JL 04	V2	■	■	■	■	■	■	■
	TUNDRA LITE JL 05	V2	■	■	■	■	■	■	■
	PIETRA GREY JL 06	V2	■	■	■	■	■	■	■
	VERDE ALPI JL 07	V2	-	-	-	-	■	■	-
	<b>Peso lordo per scatola</b> Gross weight per box	27,36	27,36	55,12	55,12	30,30	61,56	61,56	
	<b>Pezzi per scatola</b> Pieces for box	2	2	2	2	2	2	2	
	<b>mq. scatola</b> sqm. box	1,28	1,28	2,56	2,56	1,44	2,88	2,88	
	<b>Scatole / Full pallet</b> boxes / Full pallet	48	48	16	16	35	20	20	
	<b>mq. pallet</b> sqm. pallet	61,44	61,44	40,96	40,96	50,40	57,60	57,60	

		± 6 mm			
Formati Nominali Nominal Sizes		1200x2780 48"x110"		Line 1200x2780 48"x110"	* Kit Vein Matching 1200x2780 48"x110"
Tutti i formati sono rettificati.   All sizes are rectified.					
Superficie Finish		LUC	SP	SP	LUC
	STATUARIO FINE JL 01	V2	■	-	■
	CALACATTA SELECT JL 02	V2	■	-	■
	CALACATTA VENA ANTICA JL 03	V2	■	-	■
	LINCOLN JL 04	V2	■	■	■
	TUNDRA LITE JL 05	V2	■	-	-
	PIETRA GREY JL 06	V2	■	-	-
	VERDE ALPI JL 07	V2	■	-	-
	<b>Peso lordo per scatola</b> Gross weight per box				
	<b>Pezzi per scatola</b> Pieces for box				
	<b>mq. scatola</b> sqm. box	Please refer to page 562	Please refer to page 562	Please refer to page 562	Please refer to page 562
	<b>Scatole / Full pallet</b> boxes / Full pallet				
	<b>mq. pallet</b> sqm. pallet				

Per tutti i grandi formati è possibile prevedere, su richiesta, e con un lotto minimo l'applicazione di una stuoia in fibra di vetro.  
For big sizes, a fibreglass mat can be applied on request, with a minimum production batch.

\* Kit Vein Matching (4 pz / 4 pcs)

ACCORDIMENTI SPECIFICI PER L'APPLICAZIONE DELLE GRANDI LASTRE IN 6 MM DI SPESSORE: p. 556 | Precautions for 6mm big slabs applications: page 556 | spezifische Anweisungen zur Nutzung der Grossformate in 6mm: seite 556 | Precauciones específicas para la aplicación de las grandes placas en 6 mm de espesor: page 556 | Precautions spécifiques pour la pose des grandes plaques en 6mm d'épaisseur: página 556 | специальные предосторожности для укладки больших плит толщиной 6 мм : страница 556

SP: Spazzolata  
LUC: Lucido | Glossy | Lucida | Lucida | Lustrado | блестящая | 闪亮

PEZZI SPECIALI

Special pieces | Sonderstücke | Pièces spéciales | Piezas especiales | специальные изделия | 特殊件

		Battiscopa*		Gradino A*		Gradino A*		Gradino G*	
		72x800 27½"x24"		330x800 13½"x31½"		330x1200 13½"x48"		330x800 13½"x31½"	
Pezzi speciali Special pieces									
Superficie Finish		SP	LUC	SP	LUC	LUC	SP	LUC	
	STATUARIO FINE JL 01	■	■	■	■	■	■	■	■
	CALACATTA SELECT JL 02	■	■	■	■	■	■	■	■
	CALACATTA VENA ANTICA JL 03	-	■	-	■	■	-	■	■
	LINCOLN JL 04	■	■	■	■	■	■	■	■
	TUNDRA LITE JL 05	■	■	■	■	■	■	■	■
	PIETRA GREY JL 06	■	■	■	■	■	■	■	■
	VERDE ALPI JL 07	-	-	-	-	■	-	-	-
	<b>Pezzi per scatola</b> Pieces for box	10	10	7	7	4	7	7	

\* Finitura a becco di civetta | One-round edge shaping | Ausführung mit Eckabrundung | Façonnage à bord rond | Acabado canto romo | Плитка с завалом | 鹰嘴边缘处理

		Gradino B ang.		Gradino B		Gradino B	
		330x330 13½"x13½"		330x800 13½"x31½"		330x1200 13½"x48"	
Pezzi speciali Special pieces							
Superficie Finish		SP	LUC	SP	LUC	LUC	
	STATUARIO FINE JL 01	■	■	■	■	■	
	CALACATTA SELECT JL 02	■	■	■	■	■	
	CALACATTA VENA ANTICA JL 03	-	■	-	■	■	
	LINCOLN JL 04	■	■	■	■	■	
	TUNDRA LITE JL 05	■	■	■	■	■	
	PIETRA GREY JL 06	■	■	■	■	■	
	VERDE ALPI JL 07	-	■	-	-	■	
	<b>Pezzi per scatola</b> Pieces for box	4	4	4	4	2	

MY NOTES

.....

.....

.....

.....

.....

Maggiori informazioni  
More information



SP: Spazzolata  
LUC: Lucido | Glossy | Lucida | Lucida | Lustrado | блестящая | 闪亮

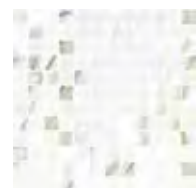
**DECORI**

Decors | Dekore | Decors | Decoros | Декоры | 装饰砖

**Mosaico 144 LUC**  
300x300 / 12"x12"  
Tessere 22x22 / 4/5"x4/5"



STATUARIO FINE  
**JL 01**



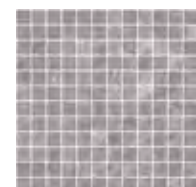
CALACATTA SELECT  
**JL 02**



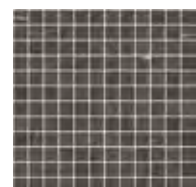
CALACATTA VENA ANTICA  
**JL 03**



LINCOLN  
**JL 04**



TUNDRA LITE  
**JL 05**



PIETRA GREY  
**JL 06**

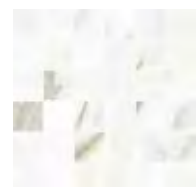


VERDE ALPI  
**JL 07**

**Mosaico 36T LUC**  
300x300 / 12"x12"  
Tessere 48x48 / 2"x2"



STATUARIO FINE  
**JL 01**



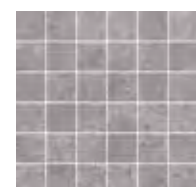
CALACATTA SELECT  
**JL 02**



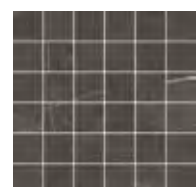
CALACATTA VENA ANTICA  
**JL 03**



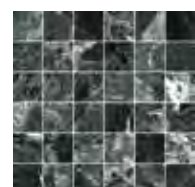
LINCOLN  
**JL 04**



TUNDRA LITE  
**JL 05**



PIETRA GREY  
**JL 06**



VERDE ALPI  
**JL 07**

**MOSAICO 36T, MOSAICO 144T, FOLIAGE:**  
Decoro su rete | Mesh-backed decoration | Dekor auf netz | Décor sur filet | Decoración en red | Декор в сету | 网板背帖装饰件



**Pezzi per scatola**  
Pieces for box

<b>Mosaico 144</b>	6
<b>Mosaico 36T</b>	6

# LINE

Una nuova proposta decorativa che esalta le superfici,  
per un effetto dalla profondità sorprendente.

A new decorative effect that brings out the astonishing depth of our surfaces.

**Line SP RECT**  
1200x2780 / 48"x110"



LINCOLN  
**JL 04**



WALL: Lincoln **JL 04** Line 1200x2780 / 48"x110" SP RECT  
FLOOR: Lincoln **JL 04** 1200x1200 / 48"x48" SP RECT  
WASHBASIN: Bathmood Comfort Lincoln **JL 04** SP



# Kit Vein Matching.

Per offrire un servizio sempre più personalizzato, Mirage® mette a disposizione il Kit Vein Matching nei colori Statuario Fine JL 01, Calacatta Select JL 02, Calacatta Vena Antica JL 03 e Lincoln JL 04 in formato 1200x2780 mm, superficie lucida. Il kit è composto da 4 lastre numerate e dalle grafiche sequenziali ad effetto vena continua.

For an increasingly customised service, Mirage® offers the Vein Matching Kit in JL 01, JL 02, JL 03 and JL 04 colours, in 1200x2780 mm size, glossy finish.

The kit is composed of 4 numbered slabs and sequential patterns that create a continuous vein effect.

**FORMATO / SIZE** 1200x2780  
48"x110"  
LUC

**COLORI / COLOURS:**

- JL 01 STATUARIO FINE**
- JL 02 CALACATTA SELECT**
- JL 03 CALACATTA VENA ANTICA**
- JL 04 LINCOLN**

6 mm

**JL 01 - 1200x2780 / 48"x110" LUC**

**JL 02 - 1200x2780 / 48"x110" LUC**

**JL 03 - 1200x2780 / 48"x110" LUC**

**JL 04 - 1200x2780 / 48"x110" LUC**

Vein matching Kit

Il processo produttivo non garantisce la continuità nel disegno della venatura tra i vari pezzi spediti. Eventuali disallineamenti tra le venature in continuità sono da considerarsi caratteristica intrinseca del prodotto. L'immagine rappresentata serve a dare un'idea indicativa del prodotto, toni e venature possono essere quindi suscettibili di variazioni.

The production process does not guarantee continuity in the design of the veining among the various pieces provided. Any misalignment between the continuous veining is to be considered an intrinsic characteristic of the product. The image shown is merely indicative; the shades and veinings of the product may be subject to variations.

## CARATTERISTICHE TECNICHE

Technical specifications | Technische Eigenschaften | Caractéristiques techniques | Características técnicas | Технические характеристики | 技术特征

### STANDARD EN 14411 - G

CARATTERISTICHE TECNICHE TECHNICAL DATA TECHNISCHE DATEN CARACTERISTIQUES TECHNIQUES CARACTERÍSTICAS TÉCNICAS ТЕХНИЧЕСКИЕ ХАРАКТЕРИСТИКИ 技术特征	NORMA STANDARD NORM NORME NORMA НОРМА ЗНАЧЕНИЯ 标准	VALORI PRESCRITTI DALLE NORME EN 14411 - G INTERNATIONAL STANDARDS EN 14411 - G INTERNATIONALE NORMWERTE EN 14411 - G VALEURS PREVUES PAR LES NORMES EN 14411 - G VALORES PREVISTOS POR LAS NORMAS EN 14411 - G ПРЕДУСМОТРЕННЫЕ СТАНДАРТОМ EN 14411-G EN 14411 - G标准规定值	VALORE MEDIO MIRAGE MIRAGE AVERAGE VALUE MIRAGE MITTELWERT VALEURS MOYEN MIRAGE VALOR MEDIO MIRAGE СРЕДНЕЕ ЗНАЧЕНИЕ MIRAGE MIRAGE平均值	
			LUC (GL)	SP (UGL)
<b>CARATTERISTICHE DIMENSIONALI - SIZE CHARACTERISTICS - MASSEIGENSCHAFTEN</b> DETERMINATION DES CARACTERISTIQUES DIMENSIONNELLES - CARACTERÍSTICAS DIMENSIONALES - РАЗМЕРНЫЕ ХАРАКТЕРИСТИКИ - 尺寸特征				
<b>LATI</b> SIDES - SEITEN COTES - CANTOS РАЗМЕРЫ СТОРОН - 側边	EN ISO 10545-2	± 0,3% MAX (± 1,0 mm MAX)	CONFORME COMPLYING	
<b>SPESSORE</b> THICKNESS - DICKE EPAISSEUR - ESPESOR ТОЛЩИНА - 厚度	EN ISO 10545-2	± 5,0% MAX (± 0,5 mm MAX)	CONFORME COMPLYING	
<b>RETTILINEITÀ DEGLI SPIGOLI</b> STRAIGHTNESS OF SIDES - GERADLINIGKEIT DER KANTEN RECTITUDE DES ARETES - RECTITUD DE LOS CANTOS КОСОУГОЛЬНОСТЬ - 边角平直度	EN ISO 10545-2	± 0,3% MAX (± 0,8 mm MAX)	CONFORME COMPLYING	
<b>ORTOGONALITÀ</b> RECTANGULARITY - RECHTWINKLIGKEIT PERPENDICULARITÉ - ORTOGONALIDAD КРИВИЗНА СТОРОН - 直角度	EN ISO 10545-2	± 0,3% MAX (± 1,5 mm MAX)	CONFORME COMPLYING	
<b>PLANARITÀ</b> SURFACE FLATNESS - EBENFLÄCHIGKEIT PLANEITE DE SURFACE - PLANEIDAD КРИВИЗНА ЛИЦЕВОЙ ПОВЕРХНОСТИ - 平整度	EN ISO 10545-2	± 0,4% MAX (± 1,8 mm MAX)	CONFORME COMPLYING	
<b>ASSORBIMENTO D'ACQUA</b> WATER ABSORPTION - WASSERAUFNAHME ABSORPTION D'EAU - ABSORCIÓN DE AGUA ВОДОПОГЛОЩЕНИЕ - 吸水率	EN ISO 10545-3	≤ 0,5%	≤ 0,1%	
<b>RESISTENZA ALLA FLESSIONE</b> FLEXION RESISTANCE - BIEGEFESTIGKEIT RESISTANCE A LA FLEXION - RESISTENCIA A LA FLEXIÓN ПРЕДЕЛ ПРОЧНОСТИ ПРИ ИЗГИБЕ - 抗弯强度	EN ISO 10545-4	S ≥ 700 N (< 7,5 mm) S ≥ 1.300 N (> 7,5 mm) R ≥ 0,48 N/mm²	±6 mm: S≥1100N R≥48 N/mm² ±9 mm: S≥2500N R≥50 N/mm²	
<b>RESISTENZA ALL'URTO</b> IMPACT RESISTANCE - STOSSEFESTIGKEIT RESISTANCE AUX CHOCES - RESISTENCIA A LOS GOLPES УДАРСТОЙКОСТЬ - 抗冲击强度	EN ISO 10545-5	VALORE DICHIARATO DECLARED VALUE	> 0,80	
<b>RESISTENZA ALL'ABRASIONE</b> ABRASION RESISTANCE - ABRIEBFESTIGKEIT RESISTANCE A L'ABRASION - RESISTENCIA A LA ABRASIÓN СТОЙКОСТЬ К ИСТИРАНИЮ - 耐磨强度	EN ISO 10545-6	≤ 175 mm³	< 150 mm³	
<b>COEFFICIENTE DI DILATAZIONE TERMICA LINEARE</b> COEFFICIENT OF LINEAR THERMAL-EXPANSION - LINEARER WÄRMEAUDEHNUNGSKOEFFIZIENT COEFFICIENT DE DILATATION THERMIQUE LINEAIRE - COEFICIENTE DE DILATACIÓN TÉRMICA LINEAL КОЭФИЦИЕНТ ЛИНЕЙНОГО ТЕРМИЧЕСКОГО РАСШИРЕНИЯ - 线性热膨胀系数	EN ISO 10545-8	-	α 6,2x10 <sup>-6</sup> /°C	
<b>RESISTENZA AGLI SBALZI TERMICI</b> RESISTANCE TO THERMAL SHOCKS - BESTÄNDIGKEIT GEGEN TEMPERATURSCHWANKUNGEN RESISTANCE AUX CHOCS THERMIQUES - RESISTENCIA A LOS CHOQUES TÉRMICOS СТОЙКОСТЬ К ПЕРЕПАДАМ ТЕМПЕРАТУРЫ - 耐热突变性	EN ISO 10545-9	TEST SUPERATO SECONDO EN ISO 10545-1 PASS ACCORDING EN ISO 10545-1	NESSUN DANNO NO DAMAGE	
<b>RESISTENZA AL GELO</b> FROST RESISTANCE - FROSTBESTÄNDIGKEIT RESISTANCE AU GEL - RESISTENCIA AL HIELO МОРОЗОСТОЙКОСТЬ - 耐冻性	EN ISO 10545-12	TEST SUPERATO SECONDO EN ISO 10545-1 PASS ACCORDING EN ISO 10545-1	NESSUN DANNO NO DAMAGE	
<b>RESISTENZA ALL'ATTACCO CHIMICO</b> RESISTANCE TO CHEMICALS - CHEMIKALIENBESTÄNDIGKEIT RESISTANCE A L'ATTAQUE CHIMIQUE - RESISTENCIA QUÍMICA ХИМИЧЕСКАЯ СТОЙКОСТЬ - 耐化学品作用	EN ISO 10545-13	B MIN.	ALA	ALA HA
<b>RESISTENZA ALL'ABRASIONE SUPERFICIALE</b> SURFACE ABRASION RESISTANCE - ABRIEBFESTIGKEIT DER OBERFLÄCHE RESISTANCE À L'ABRASION SUPERFICIELLE - RESISTENCIA A LA ABRASIÓN SUPERFICIAL ХИМИЧЕСКАЯ СТОЙКОСТЬ - 耐表面磨损	EN ISO 10545-7	-	LUC PEI 5 (JL 01 - 02 - 03 - 04) PEI 4 (JL 05) PEI 3 (JL 06 - 07)	
<b>RESISTENZA ALLE MACCHIE</b> RESISTANCE TO STAINS - FLECKENBESTÄNDIGKEIT RESISTANCE AUX TACHES - RESISTENCIA A LAS MANCHAS УСТОЙЧИВОСТЬ К ПЯТНООБРАЗОВАНИЮ - 防污性	EN ISO 10545-14	VALORE DICHIARATO DECLARED VALUE	5	5
<b>CESSIONE DI PIOMBO E CADMIO</b> LEAD AND CADMIUM DISCHARGE - ABGABE VON BLEI UND CADMIUM PERTE DE PLOMB ET CADMIUM - CESIÓN DE PLOMO Y CADMIO ВЫДЕЛЕНИЕ СВИНЦА И КАДМИЯ - 铅和镉的排放	EN ISO 10545-15	VALORE DICHIARATO DECLARED VALUE	< AL LIMITE DI RILEVAMENTO < THAN INSTRUMENT LIMIT	
			LUC	SP
	DM 236/89 BCRA	> 0,40	-	> 0,40
	ANSI A326.3	Wet and Dry	-	≥ 0,42
	AS 4586	-	-	P2
	DIN 51130	-	-	R9
	DIN 51097	-	-	-
	UNE 41901	≥ CL1	-	CL1
	BS 7976 sl.96-4S	Wet and Dry	-	-
	BS 7976 sl.55-TRL	Wet and Dry	-	-
<b>SCIVOLOSITÀ</b> SKID RESISTANCE - RUTSCHWERT GLISSANCE - ADHERENCIA СКОЛЬЗКОСТЬ - 防滑性				

Per i certificati specifici, contattare Mirage SpA - For specific certificates, please contact Mirage SpA - Für die speziellen Zertifikate wenden Sie sich bitte an Mirage SpA - Pour les certificats spécifiques, veuillez contacter Mirage SpA - Para los certificados específicos, contactar Mirage SpA - Для сертификатов обращаться к компании Mirage SpA - 关于具体的证书,请联系 Mirage SpA

\* La superficie LUC può essere soggetta a graffi se in contatto con materiali più duri (es sassi, frammenti di piastrella, etc...) LUC finish can be subjected to scratches if in contact with harder materials (eg stones, tile fragments, etc...)