



WALL: Indio **LY 07** 600x1200 / 24"x48" SP RECT  
FLOOR: Afterglow **LY 05** 150x600 / 6"x24" SP RECT

# LEMMY



**Metals aged and scratched by the passage of time; colour contrasts between the original gleam of the metal and the opaque marks typical of oxidisation.**

Lemmy captures the most intimate emotion of metal at its most natural and authentic to bring an elegant, unconventional touch.



Nimbus **LY 02** 1200x2780 / 48"x110" SP RECT



FLOOR: Palladium LY 01 600x1200 / 24"x48" SP RECT

**COLORI**

Colours | Farben | Couleurs | Colores | Цветов | 种颜色



Palladium  
LY 01



Nimbus  
LY 02



Excalibur  
LY 03



Venom  
LY 04



Afterglow  
LY 05



Viridium  
LY 06



Indio  
LY 07



Pumpkin  
LY 08



King  
LY 09



FLOOR: Nimbus **LY 02** 600x600 / 24"x24" SP RECT  
WALL: Pumpkin **LY 08** 600x1200 / 24"x48" SP RECT  
SHOWER: Nimbus **LY 02** 1200x2780 / 48"x110" SP RECT

**COLORI**

Colours | Farben | Couleurs | Colores | Цветов | 种颜色

**PALLADIUM LY 01**



Formati Nominali Nominal Sizes		Superficie Finish	Spessore mm Thickness mm
150x600 / 6"x24"	SP RECT	9	
300x600 / 12"x24"	SP / NAT RECT	9	
600x600 / 24"x24"	SP / NAT RECT	9	
600x1200 / 24"x48"	SP RECT	9	
800x800 / 31½"x31½"	SP RECT	9	
1200x1200 / 48"x48"	SP RECT	9	
1200x1200 / 48"x48"	SP RECT	6	
1200x2780 / 48"x110"	SP RECT	6	

Stucchi consigliati Recommended grouts		
KERAKOLL	03	
MAPEI	111 Grigio Argento	
LATICRETE	88 Silver Shadow	



**VENOM LY 04**



Formati Nominali Nominal Sizes		Superficie Finish	Spessore mm Thickness mm
150x600 / 6"x24"	SP RECT	9	
300x600 / 12"x24"	SP / NAT RECT	9	
600x600 / 24"x24"	SP / NAT RECT	9	
600x1200 / 24"x48"	SP RECT	9	
800x800 / 31½"x31½"	SP RECT	9	
1200x1200 / 48"x48"	SP RECT	9	
1200x1200 / 48"x48"	SP RECT	6	
1200x2780 / 48"x110"	SP RECT	6	
800x800 / 31½"x31½"	ST RECT	20	

Stucchi consigliati Recommended grouts		
KERAKOLL	11	
MAPEI	114 Antracite	
LATICRETE	45 Raven	



**NIMBUS LY 02**



Formati Nominali Nominal Sizes		Superficie Finish	Spessore mm Thickness mm
150x600 / 6"x24"	SP RECT	9	
300x600 / 12"x24"	SP / NAT RECT	9	
600x600 / 24"x24"	SP / NAT RECT	9	
600x1200 / 24"x48"	SP RECT	9	
800x800 / 31½"x31½"	SP RECT	9	
1200x1200 / 48"x48"	SP RECT	9	
1200x1200 / 48"x48"	SP RECT	6	
1200x2780 / 48"x110"	SP RECT	6	
800x800 / 31½"x31½"	ST RECT	20	

Stucchi consigliati Recommended grouts		
KERAKOLL	05	
MAPEI	110 Manhattan	
LATICRETE	89 Smoke Grey	



**AFTERGLOW LY 05**



Formati Nominali Nominal Sizes		Superficie Finish	Spessore mm Thickness mm
150x600 / 6"x24"	SP RECT	9	
300x600 / 12"x24"	SP / NAT RECT	9	
600x600 / 24"x24"	SP / NAT RECT	9	
600x1200 / 24"x48"	SP RECT	9	
800x800 / 31½"x31½"	SP RECT	9	
1200x1200 / 48"x48"	SP RECT	9	
1200x1200 / 48"x48"	SP RECT	6	
1200x2780 / 48"x110"	SP RECT	6	

Stucchi consigliati Recommended grouts		
KERAKOLL	20	
MAPEI	110 Manhattan	
LATICRETE	89 Smoke Grey	



**EXCALIBUR LY 03**



Formati Nominali Nominal Sizes		Superficie Finish	Spessore mm Thickness mm
150x600 / 6"x24"	SP RECT	9	
300x600 / 12"x24"	SP / NAT RECT	9	
600x600 / 24"x24"	SP / NAT RECT	9	
600x1200 / 24"x48"	SP RECT	9	
800x800 / 31½"x31½"	SP RECT	9	
1200x1200 / 48"x48"	SP RECT	9	
1200x1200 / 48"x48"	SP RECT	6	
1200x2780 / 48"x110"	SP RECT	6	
800x800 / 31½"x31½"	ST RECT	20	

Stucchi consigliati Recommended grouts		
KERAKOLL	05	
MAPEI	112 Grigio Medio	
LATICRETE	78 Sterling Silver	



**VIRIDIUM LY 06**



Formati Nominali Nominal Sizes		Superficie Finish	Spessore mm Thickness mm
150x600 / 6"x24"	SP RECT	9	
300x600 / 12"x24"	SP RECT	9	
600x600 / 24"x24"	SP RECT	9	
600x1200 / 24"x48"	SP RECT	9	
1200x2780 / 48"x110"	SP RECT	6	

Stucchi consigliati Recommended grouts		
KERAKOLL	19	
MAPEI	114 Antracite	
LATICRETE	45 Raven	



**COLORI**

Colours | Farben | Couleurs | Cores | Цветов | 种颜色

**INDIO LY 07**



	<b>Formati Nominali</b> Nominal Sizes		<b>Superficie</b> Finish		<b>Spessore mm</b> Thickness mm
	150x600 / 6"x24"		SP RECT		9
	300x600 / 12"x24"		SP RECT		9
	600x600 / 24"x24"		SP RECT		9
	600x1200 / 24"x48"		SP RECT		9
	1200x2780 / 48"x110"		SP RECT		6
<b>Stucchi consigliati</b> Recommended grouts					
	KERAKOLL	15			
	MAPEI	114 Antracite			
	LATICRETE	45 Raven			



**PUMPKIN LY 08**



	<b>Formati Nominali</b> Nominal Sizes		<b>Superficie</b> Finish		<b>Spessore mm</b> Thickness mm
	150x600 / 6"x24"		SP RECT		9
	300x600 / 12"x24"		SP RECT		9
	600x600 / 24"x24"		SP RECT		9
	600x1200 / 24"x48"		SP RECT		9
<b>Stucchi consigliati</b> Recommended grouts					
	KERAKOLL	31			
	MAPEI	112 Grigio Medio			
	LATICRETE	78 Sterling Silver			



**KING LY 09**



	<b>Formati Nominali</b> Nominal Sizes		<b>Superficie</b> Finish		<b>Spessore mm</b> Thickness mm			
	150x600 / 6"x24"		SP RECT		9			
	300x600 / 12"x24"		SP / NAT RECT		9			
	600x600 / 24"x24"		SP / NAT RECT		9			
	600x1200 / 24"x48"		SP RECT		9			
	800x800 / 31½"x31½"		SP RECT		9			
	1200x1200 / 48"x48"		SP RECT		9			
	1200x2780 / 48"x110"		SP RECT		6			
	800x800 / 31½"x31½"		ST RECT		20			
	<b>Stucchi consigliati</b> Recommended grouts							
			KERAKOLL		08			
	MAPEI	114 Antracite						
	LATICRETE	45 Raven						



WALL: Bianco MD 01 300x450 / 12"x18" MELLOW  
FLOOR: Nimbus LY 02 800x800 / 31½"x31½" SP RECT

**RIASSUNTIVO FORMATI ED IMBALLI**

Summary of sizes and packaging | Übersicht über Formate und Verpackungen | Récapitulatif formats et emballages  
Sinóptico de formatos y embalajes | Краткая информация о форматах и упаковках | 规格和包装概述

		± 9 mm							
Formati Nominali Nominal Sizes		150x600 6"x24"	300x600 12"x24"	600x600 24"x24"	600x1200 24"x48"	800x800 31½"x31½"	1200x1200 48"x48"		
Tutti i formati sono rettificati.   All sizes are rectified.									
Superficie Finish		SP	SP	NAT	SP	NAT	SP	SP	SP
	PALLADIUM LY 01	V2	■	■	■	■	■	■	■
	NIMBUS LY 02	V2	■	■	■	■	■	■	■
	EXCALIBUR LY 03	V2	■	■	■	■	■	■	■
	VENOM LY 04	V2	■	■	■	■	■	■	■
	AFTERGLOW LY 05	V2	■	■	■	■	■	■	■
	VIRIDIUM LY 06	V2	■	■	-	■	-	■	-
	INDIO LY 07	V2	■	■	-	■	-	■	-
	PUMPKIN LY 08	V2	■	■	-	■	-	■	-
	KING LY 09	V2	■	■	■	■	■	■	■
	<b>Peso lordo per scatola</b> Gross weight per box	26,92	26,18	26,18	22,50	22,50	32,29	27,36	61,56
	<b>Pezzi per scatola</b> Pieces for box	14	7	7	3	3	2	2	2
	<b>mq. scatola</b> sqm. box	1,26	1,26	1,26	1,08	1,08	1,44	1,28	2,88
	<b>Scatole / Full pallet</b> boxes / Full pallet	40	40	40	40	40	35	48	20
	<b>mq. pallet</b> sqm. pallet	50,40	50,40	50,40	43,20	43,20	50,40	61,44	57,60

**TUTTI I FORMATI IN 9 MM NAT SONO REALIZZATI CON LA TECNOLOGIA PERFORMA (NAT R10 A+B).**  
All 9 mm NAT sizes are produced with PERFORMA technology (NAT R10 A+B).

		± 6 mm		± 20 mm			
Formati Nominali Nominal Sizes		1200x1200 48"x48"	1200x2780 48"x110"	800x800 31½"x31½"			
Tutti i formati sono rettificati.   All sizes are rectified.							
Superficie Finish		SP		ST			
	PALLADIUM LY 01	V2	■	■			-
	NIMBUS LY 02	V2	■	■			■
	EXCALIBUR LY 03	V2	■	■			■
	VENOM LY 04	V2	■	■			■
	AFTERGLOW LY 05	V2	■	■			-
	VIRIDIUM LY 06	V2	-	■			-
	INDIO LY 07	V2	-	■			-
	PUMPKIN LY 08	V2	-	-			-
	KING LY 09	V2	-	■			■
	<b>Peso lordo per scatola</b> Gross weight per box	-		29,70			
	<b>Pezzi per scatola</b> Pieces for box	2		1			
	<b>mq. scatola</b> sqm. box	2,88		0,64		Please refer to page 562	
	<b>Scatole / Full pallet</b> boxes / Full pallet	20		42			
	<b>mq. pallet</b> sqm. pallet	57,60		26,88			

Per tutti i grandi formati è possibile prevedere, su richiesta, e con un lotto minimo l'applicazione di una stuoia in fibra di vetro.  
For big sizes, a fibreglass mat can be applied on request, with a minimum production batch.

**ACCORDIMENTI SPECIFICI PER L'APPLICAZIONE DELLE GRANDI LASTRE IN 6 MM DI SPESSORE: p. 556** | Precautions for 6mm big slabs applications: page 556 | spezifische Anweisungen zur Nutzung der Grossformate in 6mm: seite 556 | Precauciones específicas para la aplicación de las grandes placas en 6 mm de espesor: page 556 | Precautions spécifiques pour la pose des grandes plaques en 6mm d'épaisseur: página 556 | специальные предосторожности для укладки больших плит толщиной 6 мм : страница 556

**PEZZI SPECIALI**

Special pieces | Sonderstücke | Pièces spéciales | Piezas especiales | специальные изделия | 特殊件

		Battiscopa*		Gradino A*		Gradino G*		Grad. B ang.		Gradino B		
Pezzi speciali Special pieces		72x600 27/8"x24"	72x800 27/8"x31½"	300x600 12"x24"	330x800 13/5"x31½"	330x1200 13/5"x48"	300x600 12"x24"	330x800 13/5"x31½"	330x330 13/5"x13/5"	330x600 13/5"x24"	330x800 13/5"x31½"	330x1200 13/5"x48"
Superficie Finish		SP	SP	SP	SP	SP	SP	SP	SP	SP	SP	SP
	PALLADIUM LY 01	■	■	■	■	■	■	■	■	■	■	■
	NIMBUS LY 02	■	■	■	■	■	■	■	■	■	■	■
	EXCALIBUR LY 03	■	■	■	■	■	■	■	■	■	■	■
	VENOM LY 04	■	■	■	■	■	■	■	■	■	■	■
	AFTERGLOW LY 05	■	■	■	■	■	■	■	■	■	■	■
	VIRIDIUM LY 06	■	■	■	■	■	■	■	■	■	■	■
	INDIO LY 07	■	-	■	-	■	■	-	■	■	-	■
	PUMPKIN LY 08	■	-	■	-	■	■	-	■	■	-	■
	KING LY 09	■	-	■	-	■	■	-	■	■	-	■
	<b>Pezzi per scatola</b> Pieces for box	10	10	7	7	4	7	7	4	4	4	2

\* Finitura a becco di civetta | One-round edge shaping | Ausführung mit Eckabrundung | Façonage à bord rond | Acabado canto romo | Плитка с завалом | 鹰嘴边缘处理

**MY NOTES**

.....

.....

.....

.....

.....

**Maggiori informazioni**  
More information



**NAT:** Naturale | Natural | Natur-unpoliert | Naturelle | Natural | Натуральный | 天然  
**ST:** Strutturata | Structured | Strukturiert | Structuré | Estructurado | Труктурированный | 结构  
**SP:** Spazzolata

DECORI

Decors | Dekore | Decors | Decoros | Декоры | 装饰砖

**Mosaico 36T SP**  
300x300 / 12"x12"  
Tessere 48x48 / 2"x2"



PALLADIUM LY 01    NIMBUS LY 02    EXCALIBUR LY 03



VENOM LY 04    AFTERGLOW LY 05    VIRIDIUM LY 06



INDIO LY 07    PUMPKIN LY 08    KING LY 09

**Foliage SP**  
323x305 / 12¾"x12"



PALLADIUM LY 01    NIMBUS LY 02    EXCALIBUR LY 03    VENOM LY 04    AFTERGLOW LY 05



VIRIDIUM LY 06    INDIO LY 07    PUMPKIN LY 08    KING LY 09

**MOSAICO 36T, FOLIAGE, PLUME:**  
Decoro su rete | Mesh-backed decoration | Dekor auf netz | Décor sur filet | Decoración en red | Декор в сети | 网板背帖装饰件

I DECORATI 800x800x20 mm

800x800x20 mm decorated tiles | Die dekorierten Fliesen 800x800x20 mm | Les décorés 800x800x20 mm  
Azulejos decorados 800x800x20 mm | Декоры 800x800x20 mm | 装饰砖 800x800x20 mm

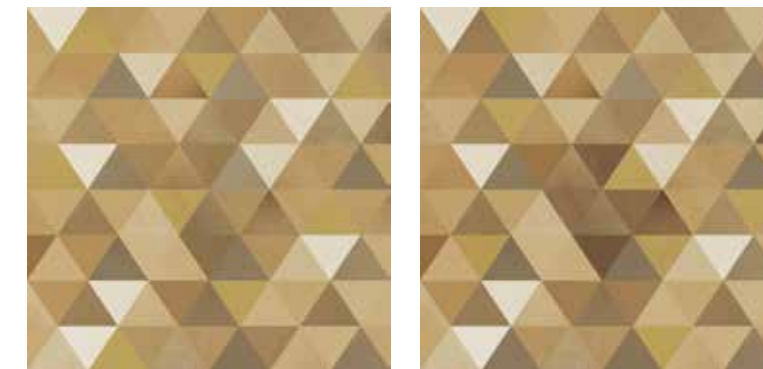
NORDIC (COLD) ST 20 MM



800x800x20 / 31½"x31½"x¾"

2 grafiche  
2 graphics

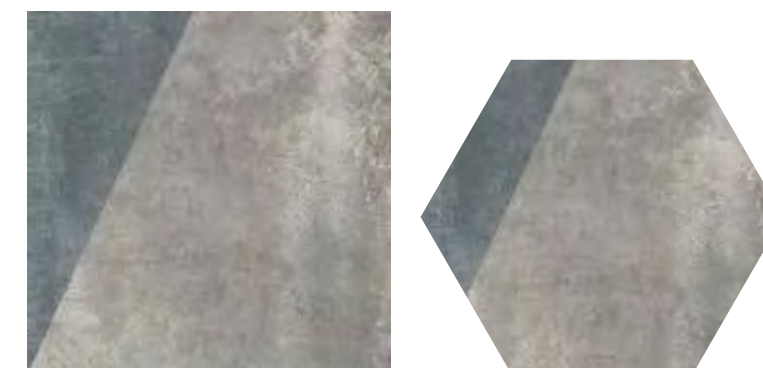
NORDIC (WARM) ST 20 MM



800x800x20 / 31½"x31½"x¾"

2 grafiche  
2 graphics

PLAY WITH ST 20 MM



EXCALIBUR LY 03  
800x800x20 / 31½"x31½"x¾"

1 grafica  
1 graphic

EXCALIBUR LY 03  
800x693x20 / 31½"x27"x¾"

4 grafiche ottenute dal formato 800x800  
4 graphics cutting size from 800x800

Pezzi per scatola Pieces for box	
<b>Mosaico 36T</b>	6
<b>Foliage</b>	10
<b>Plume</b>	6
<b>Nordic</b>	1
<b>Play With</b>	1

CARATTERISTICHE TECNICHE

Technical specifications | Technische Eigenschaften | Caractéristiques techniques | Características técnicas | Технические характеристики | 技术特征



STANDARD EN 14411 - G

	CARATTERISTICHE TECNICHE TECHNICAL DATA TECHNISCHE DATEN CARACTERISTIQUES TECHNIQUES CARACTERÍSTICAS TÉCNICAS ТЕХНИЧЕСКИЕ ХАРАКТЕРИСТИКИ 技术特征	NORMA STANDARD NORM NORME NORMA ЗНАЧЕНИЯ 标准	VALORI PRESCRITTI DALLE NORME EN 14411 - G INTERNATIONAL STANDARDS EN 14411 - G INTERNATIONALE NORMWERTE EN 14411 - G VALEURS PREVUES PAR LES NORMES EN 14411 - G VALORES PREVISTOS POR LAS NORMAS EN 14411 - G ПРЕДУСМОТРЕННЫЕ СТАНДАРТОВ EN 14411-G EN 14411 - G标准规定值	*VALORE MEDIO MIRAGE MIRAGE AVERAGE VALUE MIRAGE MITTELWERT VALEURS MOYEN MIRAGE VALORES MEDIO MIRAGE СРЕДНЕЕ ЗНАЧЕНИЕ MIRAGE MIRAGE平均值
	<b>CARATTERISTICHE DIMENSIONALI</b> - SIZE CHARACTERISTICS - MASSEIGENSCHAFTEN DETERMINATION DES CARACTERISTIQUES DIMENSIONNELLES - CARACTERÍSTICAS DIMENSIONALES - РАЗМЕРНЫЕ ХАРАКТЕРИСТИКИ - 尺寸特征			
	<b>LATI</b> SIDES - SEITEN COTES - CANTOS РАЗМЕРЫ СТОРОН - 侧边	EN ISO 10545-2	± 0,3% MAX (± 1,0 mm MAX)	CONFORME COMPLYING
	<b>SPESORE</b> THICKNESS - DICKE EPAISSEUR - ESPESOR ТОЛЩИНА - 厚度	EN ISO 10545-2	± 5,0% MAX (± 0,5 mm MAX)	CONFORME COMPLYING
	<b>RETTILINEITÀ DEGLI SPIGOLI</b> STRAIGHTNESS OF SIDES - GERADLINIGKEIT DER KANTEN RECTITUDE DES ARETES - RECTITUD DE LOS CANTOS КОСОУГОЛЬНОСТЬ - 边角平直度	EN ISO 10545-2	± 0,3% MAX (± 0,8 mm MAX)	CONFORME COMPLYING
	<b>ORTOGONALITÀ</b> RECTANGULARITY - RECHTWINKLIGKEIT PERPENDICULARITÉ - ORTOGONALIDAD КРИВИЗНА СТОРОН - 直角度	EN ISO 10545-2	± 0,3% MAX (± 1,5 mm MAX)	CONFORME COMPLYING
	<b>PLANARITÀ</b> SURFACE FLATNESS - EBENFLÄCHIGKEIT PLANEITE DE SURFACE - PLANEIDAD КРИВИЗНА ЛИЦЕВОЙ ПОВЕРХНОСТИ - 平整度	EN ISO 10545-2	± 0,4% MAX (± 1,8 mm MAX)	CONFORME COMPLYING
	<b>ASSORBIMENTO D'ACQUA</b> WATER ABSORPTION - WASSERAUFNAHME ABSORPTION D'EAU - ABSORCIÓN DE AGUA ВОДОПОГЛОЩЕНИЕ - 吸水率	EN ISO 10545-3	≤ 0,5%	≤ 0,1%
	<b>RESISTENZA ALLA FLESSIONE</b> FLEXION RESISTANCE - BIEGEFESTIGKEIT RESISTENCIA A LA FLEXIÓN - RESISTENCIA A LA FLEXIÓN ПРЕДЕЛ ПРОЧНОСТИ ПРИ ИЗГИБЕ - 抗弯强度	EN ISO 10545-4	S ≥ 700 N (< 7,5 mm) S ≥ 1.300 N (> 7,5 mm) R ≥ 35 N/mm².	≧ 6 mm: S ≥ 1100 N R ≥ 45 N/mm² ≧ 9 mm: S ≥ 2.400 N R ≥ 48 N/mm² ≧ 20 mm: S ≥ 12.500 N R ≥ 48 N/mm²
	<b>RESISTENZA ALL'URTO</b> IMPACT RESISTANCE - STOSSFESTIGKEIT RESISTANCE AUX CHOCES - RESISTENCIA A LOS GOLPES УДАРОСТОЙКОСТЬ - 抗冲击强度	EN ISO 10545-5	VALORE DICHIARATO DECLARED VALUE	> 0,80
	<b>RESISTENZA ALL'ABRAZIONE</b> ABRASION RESISTANCE - ABRIEFESTIGKEIT RESISTANCE A L'ABRASION - RESISTENCIA A LA ABRASIÓN СТОЙКОСТЬ К ИСТИРАНИЮ - 耐磨强度	EN ISO 10545-6	≤ 175 mm³	< 150 mm³
	<b>COEFFICIENTE DI DILATAZIONE TERMICA LINEARE</b> COEFFICIENT OF LINEAR THERMAL-EXPANSION - LINEARER WÄRMEAUSSDEHNUNGSKOEFFIZIENT COEFFICIENT DE DILATATION THERMIQUE LINEAIRE - COEFICIENTE DE DILATACIÓN TÉRMICA LINEAL КОЭФФИЦИЕНТ ЛИНЕЙНОГО ТЕРМИЧЕСКОГО РАСТЯЖЕНИЯ - 线性热膨胀系数	EN ISO 10545-8	-	α=6,6x10 <sup>-6</sup> °C <sup>-1</sup>
	<b>RESISTENZA AGLI SBALZI TERMICI</b> RESISTANCE TO THERMAL SHOCKS - BESTÄNDIGKEIT GEGEN TEMPERATURSCHWANKUNGEN RESISTANCE AUX CHOCES THERMIQUES - RESISTENCIA A LOS CHOQUES TÉRMICOS СТОЙКОСТЬ К ПЕРЕПАДАМ ТЕМПЕРАТУРЫ - 耐热突变性	EN ISO 10545-9	TEST SUPERATO SECONDO EN ISO 10545-1 PASS ACCORDING EN ISO 10545-1	NESSUN DANNO NO DAMAGE
	<b>RESISTENZA AL GELO</b> FROST RESISTANCE - FROSTBESTÄNDIGKEIT RESISTANCE AU GEL - RESISTENCIA AL HIELO МОРОЗОСТОЙКОСТЬ - 耐冻性	EN ISO 10545-12	TEST SUPERATO SECONDO EN ISO 10545-1 PASS ACCORDING EN ISO 10545-1	NESSUN DANNO NO DAMAGE
	<b>RESISTENZA ALL'ATTACCO CHIMICO</b> RESISTANCE TO CHEMICALS - CHEMIKALIENBESTÄNDIGKEIT RESISTANCE A L'ATTAQUE CHIMIQUE - RESISTENCIA QUÍMICA ХИМИЧЕСКАЯ СТОЙКОСТЬ - 耐化学作用	EN ISO 10545-13	UB MIN.	A LA HA
	<b>RESISTENZA ALLE MACCHIE</b> RESISTANCE TO STAINS - FLECKENBESTÄNDIGKEIT RESISTANCE AUX TACHES - RESISTENCIA A LAS MANCHAS УСТОЙЧИВОСТЬ К ПЯТНООБРАЗОВАНИЮ - 防污性	EN ISO 10545-14	VALORE DICHIARATO DECLARED VALUE	5
	<b>CESSIONE DI PIOMBO E CADMIO</b> LEAD AND CADMIUM DISCHARGE - ABGABE VON BLEI UND CADMIUM PERTE DE PLOMB ET CADMIUM - CESIÓN DE PLOMO Y CADMIO ВЫДЕЛЕНИЕ СВИНЦА И КАДМИЯ - 铅和镉的排放	EN ISO 10545-15	VALORE DICHIARATO DECLARED VALUE	< AL LIMITE DI RILEVAMENTO < THAN INSTRUMENT LIMIT
				SP NAT ST 20mm
			DM 236/89 BCRA	> 0,40 > 0,40 > 0,40 > 0,40
			ANSI A326.3	Wet and Dry ≥ 0,42 ≥ 0,42 ≥ 0,55
			AS 4586	- P2 P3 P5
			DIN 51130	- R9 R10 R11
			DIN 51097	- - A+B A+B+C
			UNE 41901	≥ CL1 CL1 CL2 CL3
			BS 7976 sl.96-4S	Wet and Dry - ≥ 0,36 ≥ 0,36
			BS 7976 sl.55-TRL	Wet and Dry - ≥ 0,36 ≥ 0,36
	<b>SCIVOLOSITÀ</b> SKID RESISTANCE - RUTSCHWERT GLISSANCE - ADHERENCIA СКОЛЬЗКОСТЬ - 防滑性			

Per i certificati specifici, contattare Mirage SpA - For specific certificates, please contact Mirage SpA - Für die speziellen Zertifikate wenden Sie sich bitte an Mirage SpA - Pour les certificats spécifiques, veuillez contacter Mirage SpA  
Para los certificados específicos, contactar Mirage SpA - Для сертификатов обращайтесь в компанию Mirage SpA - 关于具体的证书, 请联系Mirage SpA公司