



INDOOR FLOOR: Orsi **SK 06** 300x600 / 12"x24" NAT RECT
OUTDOOR FLOOR: Orsi **SK 06** 600x600 / 24"x24" ST RECT EVO_2/E" 20 mm

SILVERLAKE

A new take on quartzite stones, in porcelain stoneware: elegant nuances, painstaking details and soft veining effects able to faithfully reproduce the variable colours of the natural material.

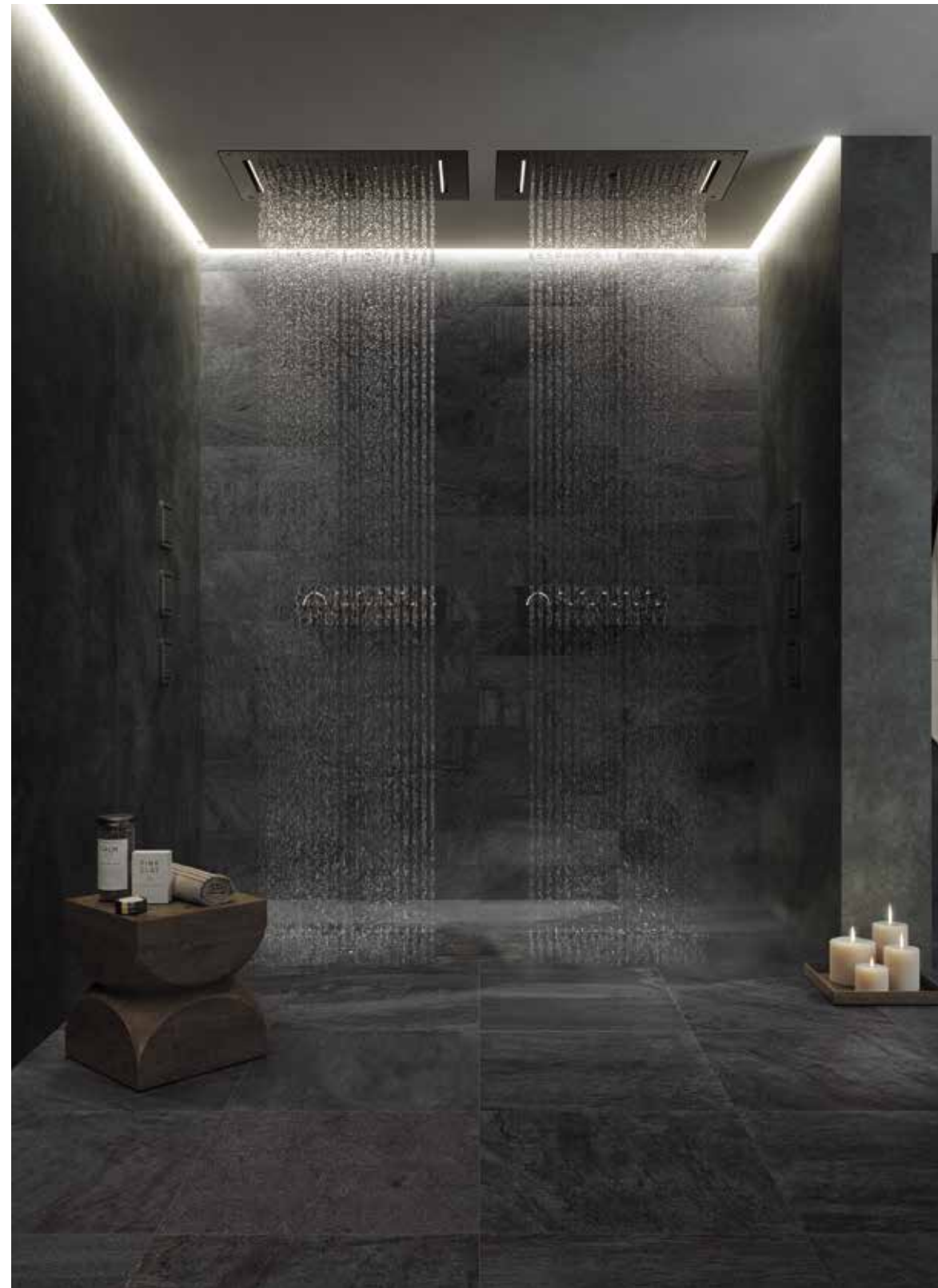
Silverlake has been developed with a colour range able to respond to a variety of needs on the market, for both residential use and design projects: a range of balanced, neutral colours, for maximum versatility.



Nemi **SK 04** 150x600 / 6"x24" NAT RECT

COLORI

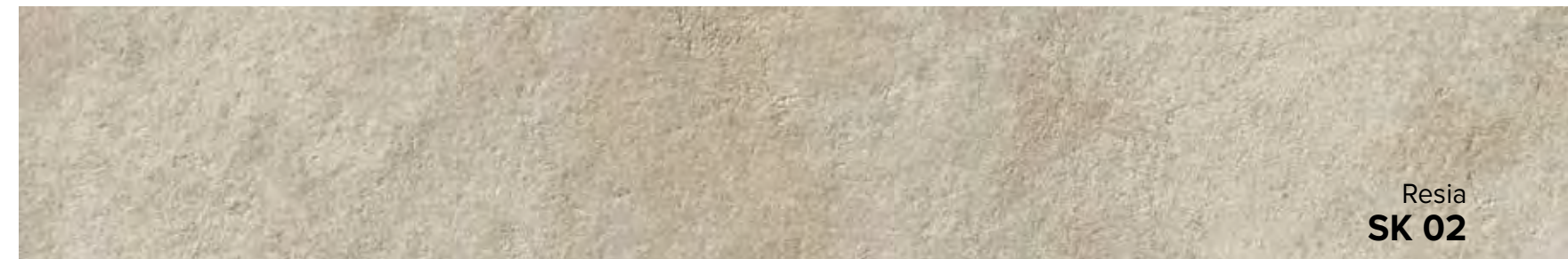
Colours | Farben | Couleurs | Colores | Цветов | 种颜色



WALL: Moro **SK 05** 150x600 / 6"x24" NAT RECT
FLOOR: Moro **SK 05** 600x600 / 24"x24" NAT RECT



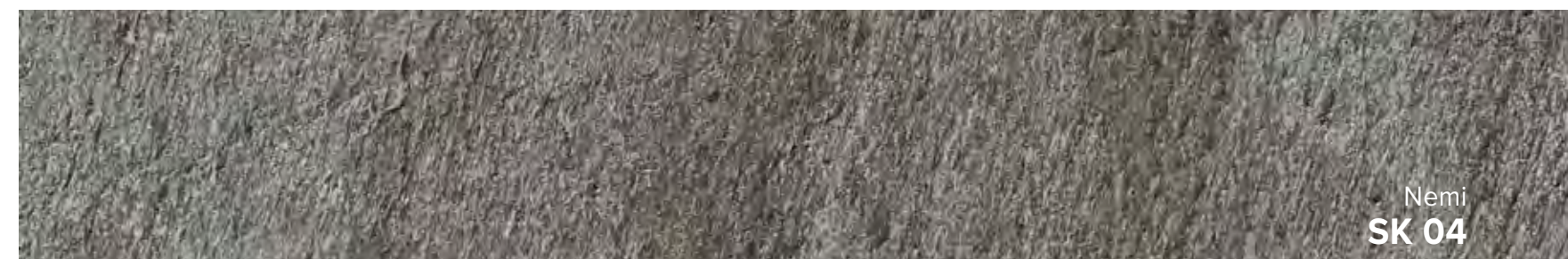
Braies
SK 01



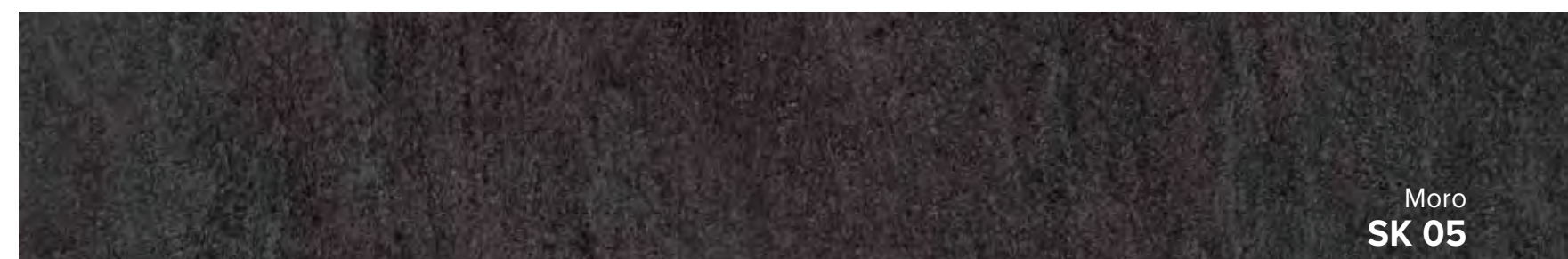
Resia
SK 02



Moritz
SK 03



Nemi
SK 04



Moro
SK 05



Orsi
SK 06



INDOOR FLOOR: Braies **SK 01** 600x1200 / 24"x48" NAT RECT
OUTDOOR FLOOR: Braies **SK 01** 600x600 / 24"x24" ST RECT EVO_2/E" 20 mm + Swimming pools special pieces



EFFETTO PIETRA

COLORI

Colours | Farben | Couleurs | Colores | Цветов | 种颜色

BRAIES SK 01



Formati Nominali Nominal Sizes	Superficie Finish	Spessore mm Thickness mm
300x300 / 12"x12"	NAT RECT	9
150x600 / 6"x24"	NAT RECT	9
300x600 / 12"x24"	NAT / ST RECT	9
600x600 / 24"x24"	NAT / ST RECT	9
600x1200 / 24"x48"	NAT / ST RECT	9
600x600 / 24"x24"	ST RECT	20
800x800 / 31½"x31½"	ST RECT	20
600x1200 / 24"x48"	ST RECT	20

Stucchi consigliati Recommended grouts		
KERAKOLL	43	
MAPEI	111 Grigio Argento	
LATICRETE	88 Silver Shadow	

NEMI SK 04



Formati Nominali Nominal Sizes	Superficie Finish	Spessore mm Thickness mm
300x300 / 12"x12"	NAT RECT	9
150x600 / 6"x24"	NAT RECT	9
300x600 / 12"x24"	NAT / ST RECT	9
600x600 / 24"x24"	NAT / ST RECT	9
600x1200 / 24"x48"	NAT / ST RECT	9
600x600 / 24"x24"	ST RECT	20
600x1200 / 24"x48"	ST RECT	20

Stucchi consigliati Recommended grouts		
KERAKOLL	08	
MAPEI	114 Antracite	
LATICRETE	45 Raven	

RESIA SK 02



Formati Nominali Nominal Sizes	Superficie Finish	Spessore mm Thickness mm
300x300 / 12"x12"	NAT RECT	9
150x600 / 6"x24"	NAT RECT	9
300x600 / 12"x24"	NAT / ST RECT	9
600x600 / 24"x24"	NAT / ST RECT	9
600x1200 / 24"x48"	NAT / ST RECT	9
600x600 / 24"x24"	ST RECT	20
800x800 / 31½"x31½"	ST RECT	20
600x1200 / 24"x48"	ST RECT	20

Stucchi consigliati Recommended grouts		
KERAKOLL	44	
MAPEI	110 Manhattan	
LATICRETE	89 Smoke Grey	

MORO SK 05



Formati Nominali Nominal Sizes	Superficie Finish	Spessore mm Thickness mm
300x300 / 12"x12"	NAT RECT	9
150x600 / 6"x24"	NAT RECT	9
300x600 / 12"x24"	NAT / ST RECT	9
600x600 / 24"x24"	NAT / ST RECT	9
600x1200 / 24"x48"	NAT / ST RECT	9
600x600 / 24"x24"	ST RECT	20
600x1200 / 24"x48"	ST RECT	20

Stucchi consigliati Recommended grouts		
KERAKOLL	11	
MAPEI	114 Antracite	
LATICRETE	45 Raven	

MORITZ SK 03



Formati Nominali Nominal Sizes	Superficie Finish	Spessore mm Thickness mm
300x300 / 12"x12"	NAT RECT	9
150x600 / 6"x24"	NAT RECT	9
300x600 / 12"x24"	NAT / ST RECT	9
600x600 / 24"x24"	NAT / ST RECT	9
600x1200 / 24"x48"	NAT / ST RECT	9
600x600 / 24"x24"	ST RECT	20
800x800 / 31½"x31½"	ST RECT	20
600x1200 / 24"x48"	ST RECT	20

Stucchi consigliati Recommended grouts		
KERAKOLL	06	
MAPEI	112 Grigio Medio	
LATICRETE	78 Sterling Silver	

ORSI SK 06



Formati Nominali Nominal Sizes	Superficie Finish	Spessore mm Thickness mm
300x300 / 12"x12"	NAT RECT	9
150x600 / 6"x24"	NAT RECT	9
300x600 / 12"x24"	NAT / ST RECT	9
600x600 / 24"x24"	NAT / ST RECT	9
600x1200 / 24"x48"	NAT / ST RECT	9
600x600 / 24"x24"	ST RECT	20
800x800 / 31½"x31½"	ST RECT	20
600x1200 / 24"x48"	ST RECT	20

Stucchi consigliati Recommended grouts		
KERAKOLL	06	
MAPEI	112 Grigio Medio	
LATICRETE	78 Sterling Silver	

RIASSUNTIVO FORMATI ED IMBALLI

Summary of sizes and packaging | Übersicht über Formate und Verpackungen | Récapitulatif formats et emballages
Sinóptico de formatos y embalajes | Краткая информация о форматах и упаковках | 规格和包装概述

		± 9 mm							
Formati Nominali Nominal Sizes		300x300 12"x12"	150x600 6"x24"	300x600 12"x24"	600x600 24"x24"	600x600 24"x24"	600x1200 24"x48"	600x1200 24"x48"	
Tutti i formati sono rettificati. All sizes are rectified.									
Superficie Finish		NAT	NAT	NAT	ST	NAT	ST	NAT	ST
BRAIES SK 01	V3	■	■	■	■	■	■	■	■
RESIA SK 02	V3	■	■	■	■	■	■	■	■
MORITZ SK 03	V3	■	■	■	■	■	■	■	■
NEMI SK 04	V3	■	■	■	■	■	■	■	■
MORO SK 05	V3	■	■	■	■	■	■	■	■
ORSI SK 06	V4	■	■	■	■	■	■	■	■
Peso lordo per scatola Gross weight per box		22,50	26,92	26,18	26,18	23,07	23,07	32,29	32,29
Pezzi per scatola Pieces for box		12	14	7	7	3	3	2	2
mq. scatola sqm. box		1,08	1,26	1,26	1,26	1,08	1,08	1,44	1,44
Scatole / Full pallet boxes / Full pallet		48	40	40	40	40	40	35	35
mq. pallet sqm. pallet		51,84	50,40	50,40	50,40	43,20	43,20	50,40	50,40

TUTTI I FORMATI IN 9 MM NAT SONO REALIZZATI CON LA TECNOLOGIA PERFORMA (NAT R10 A+B).
All 9 mm NAT sizes are produced with PERFORMA technology (NAT R10 A+B).

		GO 2/° ± 20 mm		
Formati Nominali Nominal Sizes		600x600 24"x24"	800x800 31½"x31½"	600x1200 24"x48"
Tutti i formati sono rettificati. All sizes are rectified.				
Superficie Finish		ST	ST	ST
BRAIES SK 01	V3	■	■	■
RESIA SK 02	V3	■	■	■
MORITZ SK 03	V3	■	■	■
NEMI SK 04	V3	■	-	■
MORO SK 05	V3	■	-	■
ORSI SK 06	V4	■	■	■
Peso lordo per scatola Gross weight per box		33,33	29,70	32,00
Pezzi per scatola Pieces for box		2	1	1
mq. scatola sqm. box		0,72	0,64	0,72
Scatole / Full pallet boxes / Full pallet		30	42	35
mq. pallet sqm. pallet		21,60	26,88	25,20

NAT: Naturale | Natural | Natur/unpoliert | Naturelle | Natural | Натуральный | 天然
ST: Strutturato | Structured | Strukturiert | Structuré | Estructurado | Труктурированный | 结构

PEZZI SPECIALI

Special pieces | Sonderstücke | Pièces spéciales | Piezas especiales | специальные изделия | 特殊件

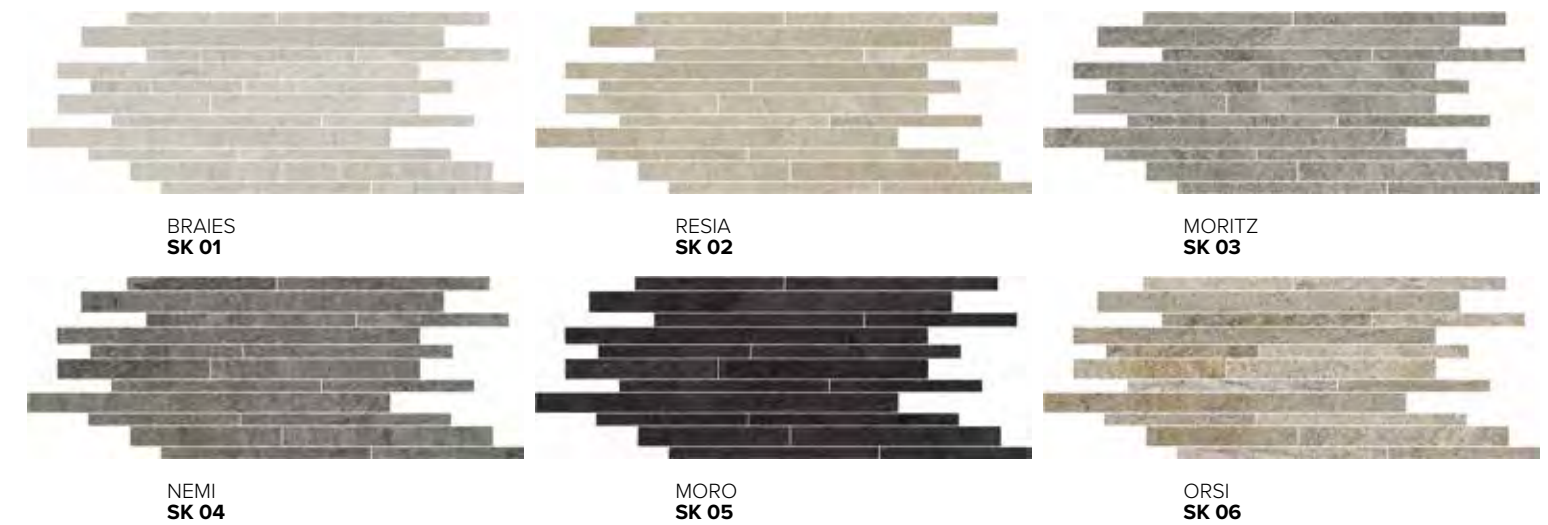
	Battiscopa*	Gradino A*	Gradino G*	Gradino B ang.	Gradino B		
Pezzi speciali Special pieces	72x600 27½"x24"	300x600 12"x24"	330x1200 13½"x48"	300x600 12"x24"	330x330 13½"x13½"	330x600 13½"x24"	330x1200 13½"x48"
Superficie Finish	NAT	NAT	NAT	NAT	NAT	NAT	NAT
BRAIES SK 01	■	■	■	■	■	■	■
RESIA SK 02	■	■	■	■	■	■	■
MORITZ SK 03	■	■	■	■	■	■	■
NEMI SK 04	■	■	■	■	■	■	■
MORO SK 05	■	■	■	■	■	■	■
ORSI SK 06	■	■	■	■	■	■	■
Pezzi per scatola Pieces for box	10	7	4	7	4	4	2

* Finitura a becco di civetta | One-round edge shaping | Ausführung mit Eckabrundung | Façonnage à bord rond | Acabado canto romo | Плитка с завалом | 鷹嘴边缘处理

DECORI

Decors | Dekore | Decors | Decoros | Декоры | 装饰砖

Layer NAT
300x600 / 12"x24"



MY NOTES

.....

.....

.....

.....

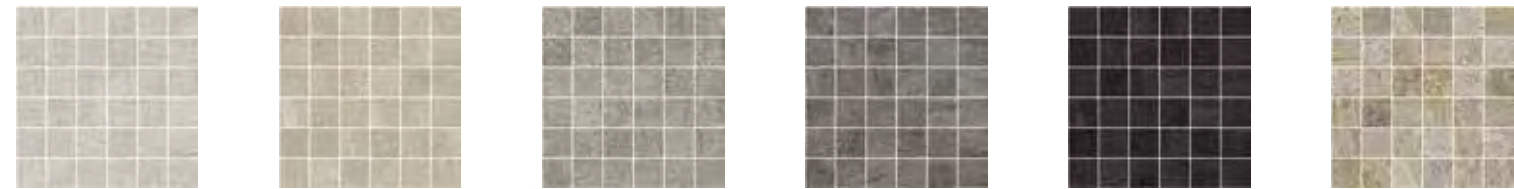
Maggiore informazioni
More information



DECORI

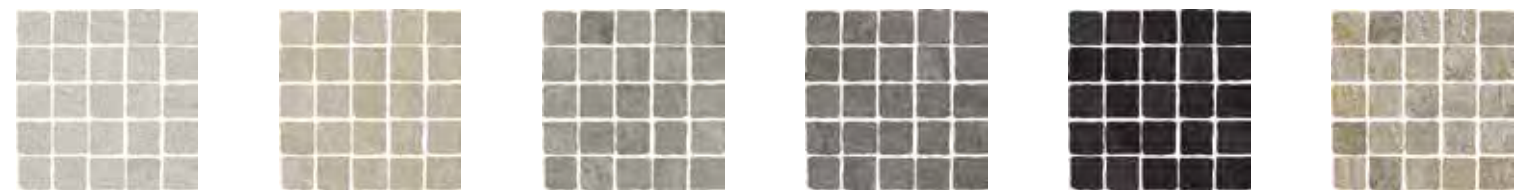
Decors | Dekore | Decors | Decoros | Декоры | 装饰砖

Mosaico 36T NAT
300x300 / 12"x12"
Tessere 48x48 / 2"x2"



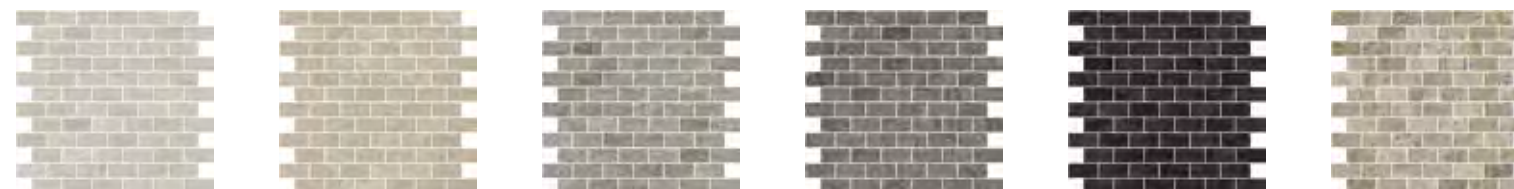
BRAIES SK 01 RESIA SK 02 MORITZ SK 03 NEMI SK 04 MORO SK 05 ORSI SK 06

Rudd NAT (burattato)
300x300 / 12"x12"
Tessere 60x60 / 2 2/8"x2 2/8"



BRAIES SK 01 RESIA SK 02 MORITZ SK 03 NEMI SK 04 MORO SK 05 ORSI SK 06

Knit NAT
300x300 / 12"x12"
Tessere 24x48 / 1"x2"



BRAIES SK 01 RESIA SK 02 MORITZ SK 03 NEMI SK 04 MORO SK 05 ORSI SK 06

MOSAICO 36T, RUDD, KNIT, LAYER:
Decoro su rete | Mesh-backed decoration | Dekor auf netz | Décor sur filet | Decoración en red | Декор в сети | 网板背帖装饰件

	Pezzi per scatola Pieces for box
	Mosaico 36T 6
	Rudd 11
	Knit 6
	Layer 4

CARATTERISTICHE TECNICHE

Technical specifications | Technische Eigenschaften | Caractéristiques techniques | Características técnicas | Технические характеристики | 技术特征

STANDARD EN 14411 - G

	CARATTERISTICHE TECNICHE TECHNICAL DATA TECHNISCHE DATEN CARACTERISTIQUES TECHNIQUES CARACTERÍSTICAS TÉCNICAS ТЕХНИЧЕСКИЕ ХАРАКТЕРИСТИКИ 技术特征	NORMA STANDARD NORM NORME NORMA НОРМА 标准	VALORI PRESCRITTI DALLE NORME EN 14411 - G INTERNATIONAL STANDARDS EN 14411 - G INTERNATIONALE NORMWERTE EN 14411 - G VALEURS PREVUES PAR LES NORMES EN 14411 - G VALORES PREVISTOS POR LAS NORMAS EN 14411 - G ПРЕДУСМОТРЕННЫЕ СТАНДАРТОМ EN 14411-G EN 14411 - G标准规定值	*VALORE MEDIO MIRAGE MIRAGE AVERAGE VALUE MIRAGE MITTELWERT VALEURS MOYEN MIRAGE VALOR MEDIO MIRAGE СРЕДНЕЕ ЗНАЧЕНИЕ MIRAGE MIRAGE平均值			
	CARATTERISTICHE DIMENSIONALI - SIZE CHARACTERISTICS - MASSEIGENSCHAFTEN DETERMINATION DES CARACTERISTIQUES DIMENSIONNELLES - CARACTERÍSTICAS DIMENSIONALES - РАЗМЕРНЫЕ ХАРАКТЕРИСТИКИ - 尺寸特征						
	LATI SIDES - SEITEN COTES - CANTOS РАЗМЕРЫ СТОРОН - 侧边	EN ISO 10545-2	± 0,3% MAX (± 1,0 mm MAX)	CONFORME COMPLYING			
	SPESSORE THICKNESS - DICKE EPAISSEUR - ESPESOR ТОЛЩИНА - 厚度	EN ISO 10545-2	± 5,0% MAX (± 0,5 mm MAX)	CONFORME COMPLYING			
	RETTILINEITÀ DEGLI SPIGOLI STRAIGHTNESS OF SIDES - GERADLINIGKEIT DER KANTEN RECTITUDE DES ARETES - RECTITUD DE LOS CANTOS КОСОУГОЛЬНОСТЬ - 边角平直度	EN ISO 10545-2	± 0,3% MAX (± 0,8 mm MAX)	CONFORME COMPLYING			
	ORTOGONALITÀ RECTANGULARITY - RECHTWINKLIGKEIT PERPENDICULARITÉ - ORTOGONALIDAD КРИВИЗНА СТОРОН - 直角度	EN ISO 10545-2	± 0,3% MAX (± 1,5 mm MAX)	CONFORME COMPLYING			
	PLANARITÀ SURFACE FLATNESS - EBENFLÄCHIGKEIT PLANEITE DE SURFACE - PLANEIDAD КРИВИЗНА ЛИЦЕВОЙ ПОВЕРХНОСТИ - 平整度	EN ISO 10545-2	± 0,4% MAX (± 1,8 mm MAX)	CONFORME COMPLYING			
	ASSORBIMENTO D'ACQUA WATER ABSORPTION - WASSERAUFNAHME ABSORPTION D'EAU - ABSORCIÓN DE AGUA ВОДОПОГЛОЩЕНИЕ - 吸水率	EN ISO 10545-3	≤ 0,5%	≤ 0,1%			
	RESISTENZA ALLA FLESSIONE FLEXION RESISTANCE - BIEGEFESTIGKEIT RESISTANCE A LA FLEXION - RESISTENCIA A LA FLEXIÓN ПРЕДЕЛ ПРОЧНОСТИ ПРИ ИЗГИБЕ - 抗弯强度	EN ISO 10545-4	S ≥ 700 N (< 7,5 mm) S ≥ 1.300 N (> 7,5 mm) R ≥ 35 N/mm².	±9 mm: S≥2.400N R≥48N/mm² ±20 mm: S≥12.500N R≥48N/mm²			
	RESISTENZA ALL'URTO IMPACT RESISTANCE - STOSSFESTIGKEIT RESISTANCE AUX CHOCS - RESISTENCIA A LOS GOLPES УДАРСТОЙКОСТЬ - 抗冲击强度	EN ISO 10545-5	VALORE DICHIARATO DECLARED VALUE	> 0,80			
	RESISTENZA ALL'ABRASIONE ABRASION RESISTANCE - ABRIEBFESTIGKEIT RESISTANCE A L'ABRASION - RESISTENCIA A LA ABRASIÓN СТОЙКОСТЬ К ИСТИРАНИЮ - 耐磨强度	EN ISO 10545-6	≤ 175 mm³	< 150 mm³			
	COEFFICIENTE DI DILATAZIONE TERMICA LINEARE COEFFICIENT OF LINEAR THERMAL-EXPANSION - LINEARER WÄRMEAUDEHNUNGSKOEFFIZIENT COEFFICIENT DE DILATATION THERMIQUE LINEAIRE - COEFICIENTE DE DILATACIÓN TÉRMICA LINEAL КОЭФФИЦИЕНТ ЛИНЕЙНОГО ТЕРМИЧЕСКОГО РАСТЯЖЕНИЯ - 线性热膨胀系数	EN ISO 10545-8	-	α=6,6x10 ⁻⁶ °C ⁻¹			
	RESISTENZA AGLI SBALZI TERMICI RESISTANCE TO THERMAL SHOCKS - BESTÄNDIGKEIT GEGEN TEMPERATURSCHWANKUNGEN RESISTANCE AUX CHOCS THERMIQUES - RESISTENCIA A LOS CHOQUES TÉRMICOS СТОЙКОСТЬ К ПЕРЕПАДАМ ТЕМПЕРАТУРЫ - 耐热突变性	EN ISO 10545-9	TEST SUPERATO SECONDO EN ISO 10545-1 PASS ACCORDING EN ISO 10545-1	NESSUN DANNO NO DAMAGE			
	RESISTENZA AL GELO FROST RESISTANCE - FROSTBESTÄNDIGKEIT RESISTANCE AU GEL - RESISTENCIA AL HIELO МОРОЗОСТОЙКОСТЬ - 耐冻性	EN ISO 10545-12	TEST SUPERATO SECONDO EN ISO 10545-1 PASS ACCORDING EN ISO 10545-1	NESSUN DANNO NO DAMAGE			
	RESISTENZA ALL'ATTACCO CHIMICO RESISTANCE TO CHEMICALS - CHEMIKALIENBESTÄNDIGKEIT RESISTANCE A L'ATTAQUE CHIMIQUE - RESISTENCIA QUÍMICA ХИМИЧЕСКАЯ СТОЙКОСТЬ - 耐化学品作用	EN ISO 10545-13	B MIN.	A LA HA			
	RESISTENZA ALLE MACCHIE RESISTANCE TO STAINS - FLECKENBESTÄNDIGKEIT RESISTANCE AUX TACHES - RESISTENCIA A LAS MANCHAS УСТОЙЧИВОСТЬ К ПЯТНООБРАЗОВАНИЮ - 防污性	EN ISO 10545-14	VALORE DICHIARATO DECLARED VALUE	5			
	CESSIONE DI PIOMBO E CADMIO LEAD AND CADMIUM DISCHARGE - ABGABE VON BLEI UND CADMIUM PERTE DE PLOMB ET CADMIUM - CESIÓN DE PLOMO Y CADMIO ВЫДЕЛЕНИЕ СВИНЦА И КАДМИЯ - 铅和镉的排放	EN ISO 10545-15	VALORE DICHIARATO DECLARED VALUE	< AL LIMITE DI RILEVAMENTO < THAN INSTRUMENT LIMIT			
	SCIVOLosità SKID RESISTANCE - RUTSCHWERT GLISSANCE - ADHERENCIA СКОЛЬЗКОСТЬ - 防滑性						
			NAT	ST	ST 20 mm		
			DM 236/89 BCRA	> 0,40	> 0,40	> 0,40	> 0,40
			ANSI A326.3	Wet and Dry	≥ 0,42	≥ 0,55	≥ 0,55
			AS 4586	-	P3	P4	P4
			DIN 51130	-	R10	R11	R11
			DIN 51097	-	A+B	A+B+C	A+B+C
			UNE 41901	≥ CL1	CL2	CL3	CL3
			BS 7976 sl.96-4S	Wet and Dry	≥ 0,36	≥ 0,36	≥ 0,36
			BS 7976 sl.55-TRL	Wet and Dry	≥ 0,36	≥ 0,36	≥ 0,36

Per i certificati specifici, contattare Mirage SpA - For specific certificates, please contact Mirage SpA - Für die speziellen Zertifikate wenden Sie sich bitte an Mirage SpA - Pour les certificats spécifiques, veuillez contacter Mirage SpA
Para los certificados específicos, contactar Mirage SpA - Для сертификатов обращайтесь в компанию Mirage SpA - 关于具体的证书, 请联系Mirage SpA公司