

# Shark

Porcelain tiles

SHARK | SHARK-B/60,7\*60,7\_R SHARK-B\_30,2\*60,7/R MOTOWN-B\_60,7\*60,7\_R



SHARK | SHARK-S\_90,7\*90,7/L/R PURE-W\_90/R



SHARK | SHARK-N\_60,7\*60,7/R

# Shark

Porcelain tiles



## SHARK



90,7 \* 90,7 \* 1,2 cm | 35<sup>1/16</sup> \* 35<sup>1/16</sup> \* 1/2"

RECTIFIED	NATURAL BN48	LAPADO BN42
<b>B</b>	18330	18336
<b>S</b>	18339	18340
<b>N</b>	18337	18338



45 \* 90,7 \* 1,2 cm | 17<sup>3/4</sup> \* 35<sup>1/16</sup> \* 1/2"

RECTIFIED	NATURAL BN70	LAPADO BN43
<b>B</b>	18674	18677
<b>S</b>	18673	18676
<b>N</b>	18675	18678



60,7 \* 60,7 \* 1 cm | 23<sup>7/8</sup> \* 23<sup>7/8</sup> \* 3/8"

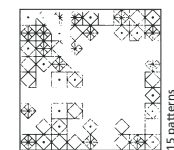
RECTIFIED	NATURAL BN33	LAPADO BN38
<b>B</b>	18329	18331
<b>S</b>	18332	18333
<b>N</b>	18334	18335



30,2 \* 60,7 \* 1 cm | 11<sup>7/8</sup> \* 23<sup>7/8</sup> \* 3/8"

RECTIFIED	NATURAL BN39	LAPADO BN74
<b>B</b>	18341	18342
<b>S</b>	18343	18344
<b>N</b>	18346	18345

## MOTOWN



60,7 \* 60,7 \* 1 cm | 23<sup>7/8</sup> \* 23<sup>7/8</sup> \* 3/8"

RECTIFIED	NATURAL BN40	LAPADO BN83
<b>B</b>	18485	18488
<b>S</b>	18486	18489
<b>N</b>	18487	18490

PIEZA COMPLEMENTARIA   COMPLEMENTARY PIECE			
Rodapie - Skirting  8 * 90,7   3 <sup>1/8</sup> * 35 <sup>1/16</sup> " P44 8 * 90,7/L   3 <sup>1/8</sup> * 35 <sup>1/16</sup> " P48 8 * 60,7   3 <sup>1/8</sup> * 23 <sup>7/8</sup> " P34 8 * 60,7/L   3 <sup>1/8</sup> * 23 <sup>7/8</sup> " P37	Peldaño técnico - Technical stair - thread  30 * 90,7   11 <sup>13/16</sup> * 35 <sup>1/16</sup> " P76 A= 1,2 cm B= 3,6 cm   A= 1/2" B= 7/16" 30 * 60,7   11 <sup>13/16</sup> * 23 <sup>7/8</sup> " P54 A= 1 cm B= 3 cm   A= 3/8" B= 1 1/16"	Peldaño romo - Rounded stair - thread  30 * 90,7   11 <sup>13/16</sup> * 35 <sup>1/16</sup> " P61 30 * 60,7   11 <sup>13/16</sup> * 23 <sup>7/8</sup> " P64	*S.K.I. *S.K.D. *Z.R.I. *Z.R.D. 

CARACTERÍSTICAS TÉCNICAS ANTIDESLIZAMIENTO   ANTI-SLIP CHARACTERISTICS			
Ensayo / Essay	Características   Features	Resultado / Result	
		NAT	LAPADO
DIN 51130	Ángulo crítico (Pies calzados)   Critical angle (footwear)	R10	R9
DIN 51097	Ángulo crítico (Pies descalzos)   Critical angle (Wet loaded barefoot)	A+B	-
BS-7976-2	Antideslizamiento (Test del péndulo)   Slip resistance (Pendulum test)	+36 Wet	+25-35 Wet
UNE-ENV-12633	Antideslizamiento (Test del péndulo)   Slip resistance (Pendulum test)	Class 2	Class 2
ISO 10545-7	Resistencia a la Abrasión Superficial/ Resistance to Surface Abrasion	PEI 4	PEI 4
QB UPEC	Producto certificado por CSTB   CSTB Certified product	 B60_U35 P3 E3 C2 S60-N60_U3 P3 E3 C2	

APLICACIONES   APPLICATIONS				
Área   Area	Revestimiento Wall		Pavimento Floor	
	NAT	LAPADO	NAT	LAPADO
Interior   Internal	✓	✓	✓	✓
Exterior   External	✓	✓	✓	✓
Comercial   Commercial	✓	✓	✓	-
Ducha   Shower	✓	✓	-	-

CARACTERÍSTICAS TÉCNICAS   TECHNICAL CHARACTERISTICS			
different shades	shade variation	various graphics	

EMBALAJE   PACKING									
Formato   Sizes	Cajas   Bo * es			Pallet			Cont./20' 21500 kg.	Cont./20' 24000 kg.	
	Piezas	m <sup>2</sup> /sq.m	kg	Cajas	m <sup>2</sup> /sq.m	kg			Tamaño cm aprox.
90,7 * 90,7 * 1,2	1	0,82	21,76	36	29,52	808,36	105 * 95 * 75	785,15	876,44
60,7 * 60,7 * 1	3	1,11	24,11	36	39,79	892,96	120 * 80 * 75	958,09	1069,50
45 * 90,7 * 1,2	2	0,82	22,80	36	29,52	845,80	100 * 100 * 59	750,39	837,64
30,2 * 60,7 * 1	5	0,92	18,95	48	44,00	934,60	120 * 80 * 76	1012,09	1129,78
inch	Units	ft <sup>2</sup>	lb	Boxes	ft <sup>2</sup>	lb	Sizes inch approx.	ft <sup>2</sup>	ft <sup>2</sup>
35 <sup>1/16</sup> * 35 <sup>1/16</sup> * 1/2	1	8,83	47,87	36	317,75	1778,39	42 <sup>5/16</sup> * 37 <sup>3/8</sup> * 29 <sup>1/2</sup>	8451,22	9433,93
23 <sup>7/8</sup> * 23 <sup>7/8</sup> * 3/8	3	11,90	53,04	36	428,32	1964,51	47 <sup>1/4</sup> * 31 <sup>1/2</sup> * 29 <sup>1/2</sup>	10312,82	11511,98
17 <sup>3/4</sup> * 35 <sup>1/16</sup> * 1/2	2	8,83	50,16	36	317,75	1860,76	39 <sup>3/8</sup> * 39 <sup>3/8</sup> * 23 <sup>1/4</sup>	8077,12	9016,33
11 <sup>7/8</sup> * 23 <sup>7/8</sup> * 3/8	5	9,87	41,69	48	473,56	2056,12	47 <sup>1/4</sup> * 31 <sup>1/2</sup> * 29 <sup>15/16</sup>	10894,05	12160,80