





60x60
V3



DAK63430
PEI 5 \bigcirc 86 / m²
mat | matt | R9 | A

DAR63430
PEI 5 \bigcirc 88 / m²
mat | matt | R10 | B

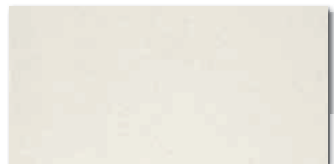


DAK63431
PEI 5 \bigcirc 86 / m²
mat | matt | R9 | A

DAR63431
PEI 5 \bigcirc 88 / m²
mat | matt | R10 | B

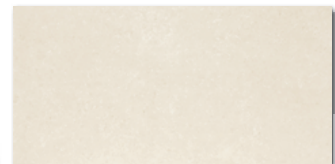


30x60
V3



DAKSE430
PEI 5 \bigcirc 82 / m²
mat | matt | R9 | A

DARSE430
PEI 5 \bigcirc 84 / m²
mat | matt | R10 | B

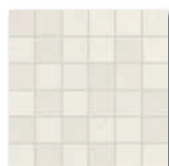


DAKSE431
PEI 5 \bigcirc 82 / m²
mat | matt | R9 | A

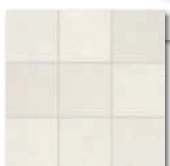
DARSE431
PEI 5 \bigcirc 84 / m²
mat | matt | R10 | B



30x30
10x10
R10
B
V3



DDM06430 (SET)
PEI 5 \bigcirc 72 / set
mat | matt



DAR12430
PEI 5 \bigcirc 90 / m²
mat | matt

news



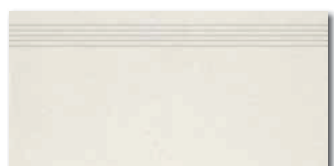
DDM06431 (SET)
PEI 5 \bigcirc 72 / set
mat | matt



DAR12431
PEI 5 \bigcirc 90 / m²
mat | matt

news

30x60
R9
V3



DCPSE430
PEI 5 \bigcirc 72 / ks
mat | matt



DCPSE431
PEI 5 \bigcirc 72 / ks
mat | matt

60x9,5



DSAS4430
 \bigcirc S8 / ks
mat | matt
slonová kost / ivory / kość słoniowa
слоновая кость / élefantsont / marfil



DSAS4431
 \bigcirc S8 / ks
mat | matt
světle béžová / light beige / jasno-bežowa
светло-бежевый / világosbézs / beige claro



60x60
V3

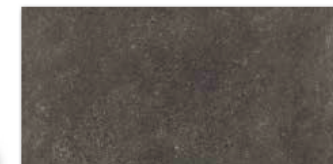


DAK63433
PEI 4 \bigcirc 86 / m²
mat | matt | R9 | A

DAR63433
PEI 4 \bigcirc 88 / m²
mat | matt | R10 | B



30x60
V3

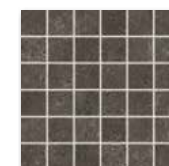


DAKSE433
PEI 4 \bigcirc 82 / m²
mat | matt | R9 | A

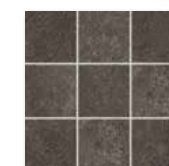
DARSE433
PEI 4 \bigcirc 84 / m²
mat | matt | R10 | B



30x30
10x10
R10
B
V3



DDM06433 (SET)
PEI 4 \bigcirc 72 / set
mat | matt



DAR12433
PEI 4 \bigcirc 90 / m²
mat | matt

news

30x60
R9
V3



DCPSE433
PEI 4 \bigcirc 72 / ks
mat | matt

60x9,5



DSAS4433
 \bigcirc S8 / ks
mat | matt
černá / black / czarna / черный / fekete / negro

výrobek / product



EN



kg/m²



m²



mm



kg



kg/m²



brutto kg

	60x60	30x60	30x30	10x10	30x60	60x9,5	30x30	10x10	30x60	60x9,5
dlaždice / floor tile	598x598x10	298x598x10	48x48x10	98x98x10	598x598x10	598x598x10	48x48x10	98x98x10	598x598x10	598x598x10
dlaždice / floor tile	EN 14411:2016, annex G B Ia GL	EN 14411:2016, annex G B Ia GL	EN 14411:2016, annex G B Ia GL	EN 14411:2016, annex G B Ia GL	EN 14411:2016, annex G B Ia GL	EN 14411:2016, annex G B Ia GL	EN 14411:2016, annex G B Ia GL	EN 14411:2016, annex G B Ia GL	EN 14411:2016, annex G B Ia GL	EN 14411:2016, annex G B Ia GL
mosaika set 30x30 cm	598x598x10	298x598x10	48x48x10	98x98x10	598x598x10	598x598x10	48x48x10	98x98x10	598x598x10	598x598x10
dlaždice / floor tile	598x598x10	298x598x10	48x48x10	98x98x10	598x598x10	598x598x10	48x48x10	98x98x10	598x598x10	598x598x10
schůdky / step tile	598x598x10	298x598x10	48x48x10	98x98x10	598x598x10	598x598x10	48x48x10	98x98x10	598x598x10	598x598x10
soška / skirting plinth	598x598x10	298x598x10	48x48x10	98x98x10	598x598x10	598x598x10	48x48x10	98x98x10	598x598x10	598x598x10
	3	6	3	10	6	13	3	10	6	13
	2,8	5,6	1,1	11	5,6	17,5	2,8	11	5,6	17,5
	1,08	1,08	0,27	0,91	1,08	0,74	1,08	0,91	1,08	0,74
	32	40	56	40	56	40	32	40	56	40
	34,56	43,20	5,8	50,96	43,20	15,9	34,56	43,20	50,96	15,9
	24,9	23,2	5,8	19,6	23,2	21,5	24,9	21,5	23,2	21,5
	23,0	21,5	21,5	1,121	21,5	21,5	23,0	21,5	21,5	21,5
	820	954	-	-	-	-	820	954	-	-

Všechny výrobky celé série vykazují velké odchylky odstínové difference V3. / All products of the entire batch show big deviations in shade difference V3.

Doporučené skladby formátů viz str. 325. | Recommended combinations of modular sizes see page 325. | Zalecane ułożenie modułowych formatów na stronie 325. | Рекомендуемый состав модульных форматов, см. стр. 325. | Composiciones de formatos recomendadas - vea la página nº 325.