

WADV4719  
 ○ 80 / m<sup>2</sup>  
 mat | matt



WLAS4719 60x9,5  
 ○ 68 / ks  
 mat | matt  
 bilo-béžová / white-beige / biatobežová / бело-бежевый  
 fehér-bézs / blanco-amarillento



WADV4720  
 ○ 80 / m<sup>2</sup>  
 mat | matt



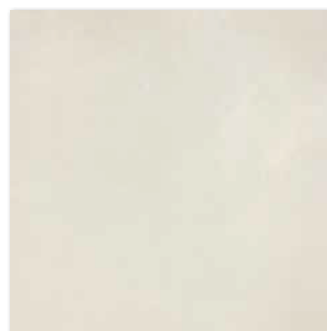
WARV4720  
 ○ 84 / m<sup>2</sup>  
 mat | matt  
 slonová kost / ivory / kość słoniowa  
 слонобая кость / elefántcsont / marfil



WLASN100  
 ○ 60 / ks  
 mat/lesk | matt/glossy  
 měděná / cupreous / miedz  
 медь / rěz / cobre



DAR63722  
 PEI 5 ○ 82 / m<sup>2</sup>  
 mat | matt  
 bílá / white / biata / белый / fehér / blanco



DAR63720  
 PEI 5 ○ 82 / m<sup>2</sup>  
 mat | matt  
 slonová kost / ivory / kość słoniowa / слонобая кость / elefántcsont / marfil



WADV4721  
 ○ 80 / m<sup>2</sup>  
 mat | matt



DAR63721  
 PEI 4 ○ 82 / m<sup>2</sup>  
 mat | matt  
 hnědo-šedá / brown-grey / brązowoszara  
 коричневый-серый / szürke-barna / gris-marrón



60x2,3

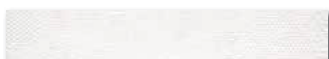


vyrobek / product

	mm	mm	EN	kg/m <sup>2</sup>	m <sup>2</sup>	kg	m <sup>2</sup>	kg	kg/m <sup>2</sup>	brutto kg
obkladáčka / wall tile	30x60	298x598x10	EN 14411:2016, annex L BIII GL	6	5,56	1,08	40	43,20	20,0	825
listela / listel	60x2,3	598x23x10	EN 14411:2016, annex L BIII GL	6	72,5	0,08	-	-	1,7	20,6
listela / listel	60x7,5	598x95x10	EN 14411:2016, annex L BIII GL	6	17,5	0,34	-	-	6,7	18,7
dlaždica / floor tile	60x60	598x598x10	EN 14411:2016, annex G BIIa GL	3	2,8	1,08	32	34,56	24,9	820



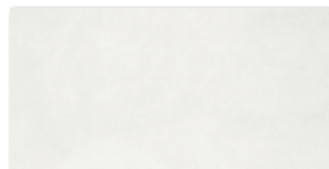
WADV4722  
80 / m<sup>2</sup>  
mat | matt



WLAS4722 60x9,5  
88 / ks  
mat | matt  
bilo-šedá / white-grey / biato-szara  
belo-seryy / fehér-szürke / blanco-gris



DAR63722  
PEI 5 82 / m<sup>2</sup>  
mat | matt  
bilá / white / biata / белый / fehér / blanco



WADV4723  
80 / m<sup>2</sup>  
mat | matt



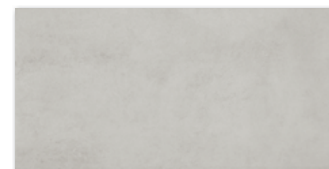
WARV4723  
84 / m<sup>2</sup>  
mat | matt  
světle šedá / light grey / jasnoszara / светло-серый  
világosszürke / gris claro



WLASN101  
60 / ks  
mat/lesk | matt/glossy  
platinová / platinum / platynowa  
платиновый / platina / platino



DAR63723  
PEI 4 82 / m<sup>2</sup>  
mat | matt  
světle šedá / light grey / jasnoszara / светло-серый  
világosszürke / gris claro



WADV4724  
80 / m<sup>2</sup>  
mat | matt



DAR63724  
PEI 4 82 / m<sup>2</sup>  
mat | matt  
tmavě šedá / dark grey / ciemnoszara / темно-серый  
sötétszürke / gris oscuro



30x60  
v2

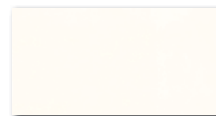
60x2,3



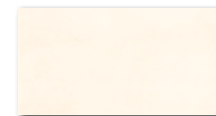
60x60  
R9  
A  
v2

vyrobek / product

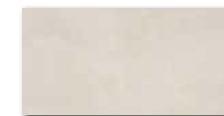
	mm	mm	EN	kg/m <sup>2</sup>	m <sup>2</sup>	kg	m <sup>3</sup>	kg	kg/m <sup>2</sup>	brutto kg	
obkladáčka / wall tile	30x60	298x598x10	EN 14411:2016, annex L BIII GL	6	5,56	1,08	40	43,20	20,0	18,5	825
listela / listel	60x2,3	598x23x10	EN 14411:2016, annex L BIII GL	6	72,5	0,08	-	-	1,7	20,6	-
listela / listel	60x9,5	598x95x10	EN 14411:2016, annex L BIII GL	6	17,5	0,34	-	-	6,7	18,7	-
dlaždice / floor tile	60x60	598x598x10	EN 14411:2016, annex G BIIa GL	3	2,8	1,08	32	34,56	24,9	23,0	820



WADMb719  
○ 72 / m<sup>2</sup>  
mat | matt

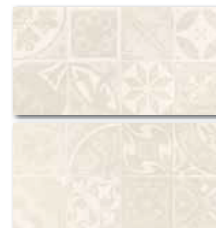


WADMb720  
○ 72 / m<sup>2</sup>  
mat | matt



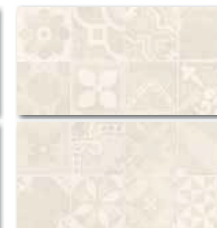
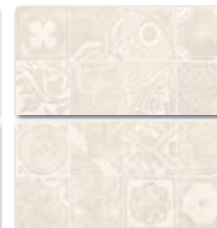
WADMb721  
○ 72 / m<sup>2</sup>  
mat | matt

bílo-běžová / white-beige / biatobezowa  
бело-бежевый / fehér-bézs / blanco-amarillento



WADMb220\*  
○ 76 / m<sup>2</sup>  
mat | matt | **V4**

slonová kost / ivory / kość słoniowa  
слоновая кость / elefántcsont / marfil



WLAMH719  
○ 52 / ks  
mat/lesk | matt/glossy



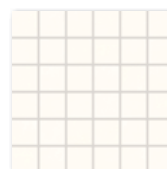
WLRMG719  
○ 52 / ks  
mat | matt



WLRMG720  
○ 52 / ks  
mat | matt



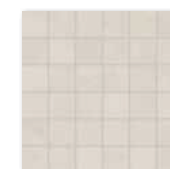
WLRMG721  
○ 52 / ks  
mat | matt



WDM05719 (SET)  
○ 66 / set  
mat | matt



WDM05720 (SET)  
○ 66 / set  
mat | matt



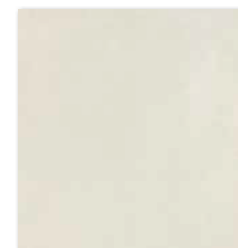
WDM05721 (SET)  
○ 66 / set  
mat | matt

bílo-běžová / white-beige / biatobezowa  
бело-бежевый / fehér-bézs / blanco-amarillento



DAR44722  
PEI 5 ○ 74 / m<sup>2</sup>  
mat | matt

bílá / white / biala / белый / fehér / blanco



DAR44720  
PEI 5 ○ 74 / m<sup>2</sup>  
mat | matt

slonová kost / ivory / kość słoniowa  
слоновая кость / elefántcsont / marfil



DAR44721  
PEI 4 ○ 74 / m<sup>2</sup>  
mat | matt

hnědo-šedá / brown-grey / brązowoszara  
коричневый-серый / szürke-barna / gris-marrón

\*Balení výrobku obsahuje nahodilý mix zobrazených designů. | The products are deliberately mixed in packing to include a random selection of designs.

vyrobek / product	mm	mm	EN	mm	kg/m <sup>2</sup>	m <sup>2</sup>	mm	mm	kg	kg/m <sup>2</sup>	brutto kg
obkladáčka / wall tile	20x40	198x398x7	EN 14411:2016, annex L BIII GL	20	12,5	1,60	48	76,80	20,6	12,9	1 016
listela / listel	40x4,8	398x48x7	EN 14411:2016, annex L BIII GL	7	52,1	0,13	-	-	1,8	13,6	-
reliefní listela / relief listel	40x2	398x20	STD No. 030 - 054498	12	125	0,09	-	-	1,7	18,9	-
mozaika set 30x30 cm / mosaic sheet 30x30 cm	5x5	48x48x7	STD No. 030 - 049913	3	11	0,27	-	-	3,5	12,9	-
diatšice / floor tile	45x45	445x445x10	EN 14411:2016, annex G BIIa GL	6	5	1,21	26	31,46	25,0	20,7	677

40x4,8

40x2

30x30

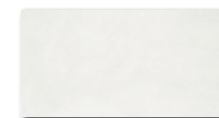


45x45

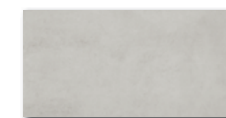




WADMB722  
 Ø 72 / m<sup>2</sup>  
 mat | matt



WADMB723  
 Ø 72 / m<sup>2</sup>  
 mat | matt



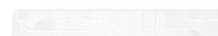
WADMB724  
 Ø 72 / m<sup>2</sup>  
 mat | matt

bilo-šedá / white-grey / biato-szara  
 бело-серый / fehér-szürke / blanco-gris

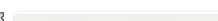


WADMB223\*  
 Ø 76 / m<sup>2</sup>  
 mat | matt | **v4**

světle šedá / light grey / jasnoszara / светло-серый  
 világosszürke / gris claro



WLAMH722  
 Ø 52 / ks  
 mat/lesk | matt/glossy



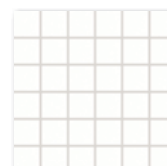
WLRMG722  
 Ø 52 / ks  
 mat | matt



WLRMG723  
 Ø 52 / ks  
 mat | matt



WLRMG724  
 Ø 52 / ks  
 mat | matt



WDM05722 (SET)  
 Ø 66 / set  
 mat | matt



WDM05723 (SET)  
 Ø 66 / set  
 mat | matt



WDM05724 (SET)  
 Ø 66 / set  
 mat | matt

bilo-šedá / white-grey / biato-szara  
 бело-серый / fehér-szürke / blanco-gris



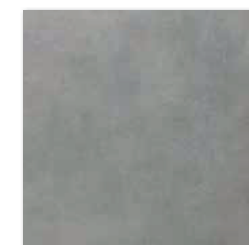
DAR44722  
 PEI 5 Ø 74 / m<sup>2</sup>  
 mat | matt

bílá / white / biata / белый / fehér / blanco



DAR44723  
 PEI 4 Ø 74 / m<sup>2</sup>  
 mat | matt

světle šedá / light grey / jasnoszara / светло-серый  
 világosszürke / gris claro



DAR44724  
 PEI 4 Ø 74 / m<sup>2</sup>  
 mat | matt

tmavě šedá / dark grey / ciemnoszara / темно-серый  
 sötétszürke / gris oscuro

\*Balení výrobku obsahuje nahodilý mix zobrazených designů. | The products are deliberately mixed in packing to include a random selection of designs.



20x40  
 v2

40x4,8

40x2

30x30



v2



v2



45x45



R9



A



v2



v2

výrobek / product



EN

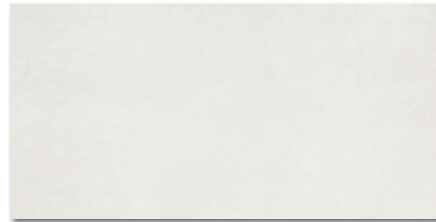


obkladáčka / wall tile	20x40	198x398x7	EN 14411:2016, annex L BIII GL	20	12,5	1,60	48	76,80	20,6	12,9	1 016
listela / listel	40x4,8	398x48x7	EN 14411:2016, annex L BIII GL	7	52,1	0,13	-	-	1,8	13,6	-
reliefní listela / relief listel	40x2	398x20	STD No. 030 - 054498	12	125	0,09	-	-	1,7	18,9	-
mazatika set 30x30 cm / mosaic sheet 30x30 cm	5x5	48x48x7	STD No. 030 - 049913	3	11	0,27	-	-	3,5	12,9	-
diabdice / floor tile	45x45	445x445x10	EN 14411:2016, annex G BIIa GL	6	5	1,21	26	31,46	25,0	20,7	677

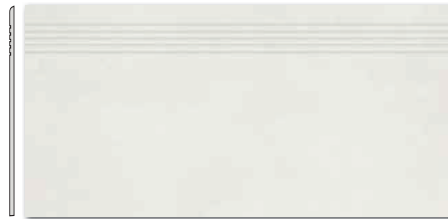




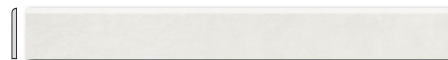
DAR81722  
PEI 5  $\bigcirc$  94 / m<sup>2</sup>  
mat | matt



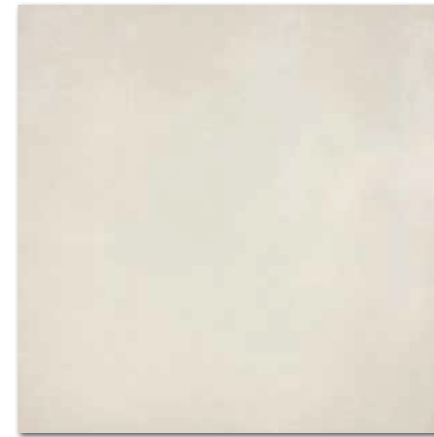
DAR84722  
PEI 5  $\bigcirc$  94 / m<sup>2</sup>  
mat | matt



DCP84722  
PEI 5  $\bigcirc$  78 / ks  
mat | matt



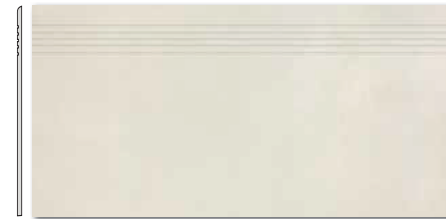
DSA89722  
 $\bigcirc$  72 / ks  
mat | matt  
biłá / white / biata / белый / fehér / blanco



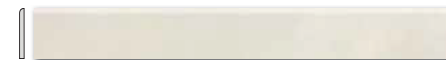
DAR81720  
PEI 5  $\bigcirc$  94 / m<sup>2</sup>  
mat | matt



DAR84720  
PEI 5  $\bigcirc$  94 / m<sup>2</sup>  
mat | matt



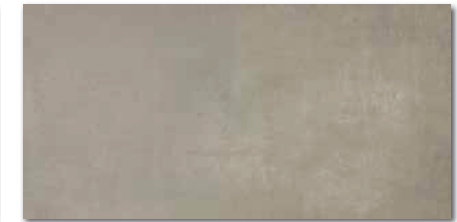
DCP84720  
PEI 5  $\bigcirc$  78 / ks  
mat | matt



DSA89720  
 $\bigcirc$  72 / ks  
mat | matt  
stonová kost / ivory / kość stonowa / слононая кость  
elefántcsont / marfil



DAR81721  
PEI 4  $\bigcirc$  94 / m<sup>2</sup>  
mat | matt



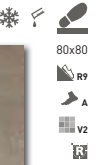
DAR84721  
PEI 4  $\bigcirc$  94 / m<sup>2</sup>  
mat | matt



DCP84721  
PEI 4  $\bigcirc$  78 / ks  
mat | matt



DSA89721  
 $\bigcirc$  72 / ks  
mat | matt  
hnědo-šedá / brown-grey / brązowoszara / коричневый-серый  
szürke-barna / gris-marrón



80x80

R9

A

V2

EN

40x80

R9

A

V2

EN

40x80

R9

A

V2

EN

80x9,5

EN

vyrobek / product



EN



cm	mm	EN	m <sup>2</sup>	m <sup>3</sup>	m <sup>3</sup>	m <sup>3</sup>	kg	kg/m <sup>2</sup>	kg/m <sup>2</sup>		
dlaždice / floor tile	80x80	798x798x10	EN 14411:2016, annex G B1a GL	2	1,6	1,28	40	51,2	28,0	21,9	1.147
dlaždice / floor tile	40x80	398x798x10	EN 14411:2016, annex G B1a GL	4	3,1	1,28	48	61,44	28,0	21,9	1.371
schodovka / step tile	40x80	398x798x10	STO č. 030 - 049916	2	3,1	0,64	-	-	14,1	21,9	-
sokl / skirting plinth	80x9,5	798x95x10	STO č. 030 - 049916	10	13,2	0,76	-	-	16,7	21,9	-

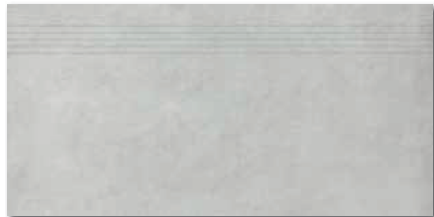
Doporučené skladby formátů viz str. 325. | Recommended combinations of modular sizes see page 325. | Zalecane ułożenie modułowych formatów na stronie 325.  
Рекомендуемый состав модульных форматов, см. стр. 325. | Composiciones de formatos recomendadas - vea la página nº 325.



DAR81723  
PEI 4 ○ 94 / m<sup>2</sup>  
mat | matt



DAR84723  
PEI 4 ○ 94 / m<sup>2</sup>  
mat | matt

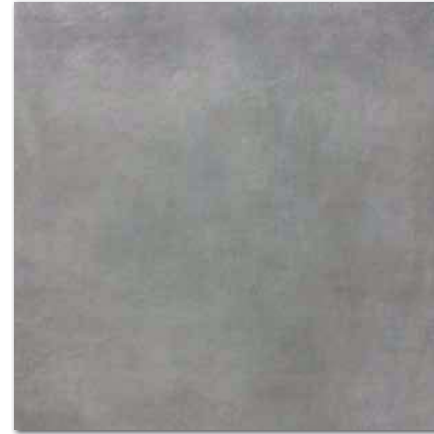


DCP84723  
PEI 4 ○ 78 / ks  
mat | matt



DSA89723  
○ 72 / ks  
mat | matt

svetle šedá / light grey / jasnoszara  
светло-серый / világosszürke / gris claro



DAR81724  
PEI 4 ○ 94 / m<sup>2</sup>  
mat | matt



DAR84724  
PEI 4 ○ 94 / m<sup>2</sup>  
mat | matt

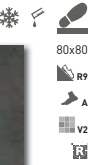


DCP84724  
PEI 4 ○ 78 / ks  
mat | matt



DSA89724  
○ 72 / ks  
mat | matt

tmavé šedá / dark grey / ciemnoszara  
темно-серый / sötétszürke / gris oscuro



DAR81725  
PEI 4 ○ 94 / m<sup>2</sup>  
mat | matt



DAR84725  
PEI 4 ○ 94 / m<sup>2</sup>  
mat | matt



DCP84725  
PEI 4 ○ 78 / ks  
mat | matt



DSA89725  
○ 72 / ks  
mat | matt

černá / black / czarna / черный / fekete / negro



výrobek / product



EN



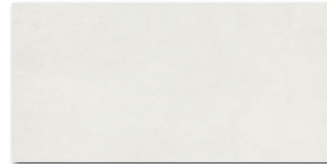
format	W	EN	kg/m <sup>2</sup>	m <sup>2</sup> /ks	kg	m <sup>2</sup> /ks	kg	kg/m <sup>2</sup>	ks/m <sup>2</sup>		
dlaždice / floor tile	80x80	798x798x10	EN 14411:2016, annex G Bla GL	2	1,6	1,28	40	51,2	28,0	21,9	1 147
dlaždice / floor tile	40x80	398x798x10	EN 14411:2016, annex G Bla GL	4	3,1	1,28	48	61,44	28,0	21,9	1 371
schodovka / step tile	40x80	398x798x10	STO č. 030 - 049916	2	3,1	0,64	-	-	14,1	21,9	-
sokl / skirting plinth	80x9,5	798x95x10	STO č. 030 - 049916	10	13,2	0,76	-	-	16,7	21,9	-

Doporučené skladby formátů viz str. 325. | Recommended combinations of modular sizes see page 325. | Zalecane ułożenie modułowych formatów na stronie 325.  
Рекомендуемый состав модульных форматов, см. стр. 325. | Composiciones de formatos recomendadas - vea la página nº 325.





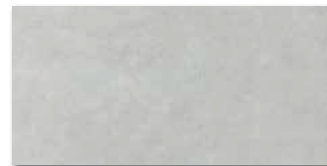
DAR63722  
PEI 5  $\odot$  82 / m<sup>2</sup>  
mat | matt



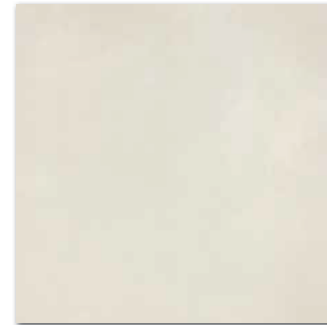
DARSE722  
PEI 5  $\odot$  78 / m<sup>2</sup>  
mat | matt  
biłá / white / biata / бeлый / fehér / blanco



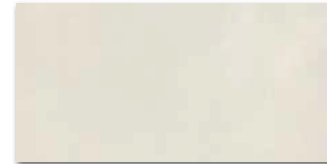
DAR63723  
PEI 4  $\odot$  82 / m<sup>2</sup>  
mat | matt



DARSE723  
PEI 4  $\odot$  78 / m<sup>2</sup>  
mat | matt  
světle šedá / light grey / jasnoszara  
светло-серый / világosszürke / gris claro



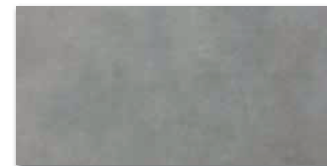
DAR63720  
PEI 5  $\odot$  82 / m<sup>2</sup>  
mat | matt



DARSE720  
PEI 5  $\odot$  78 / m<sup>2</sup>  
mat | matt  
slonová kost / ivory / kość słoniowa / слоновая кость  
elefántcsont / marfil



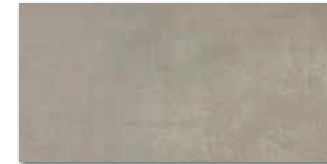
DAR63724  
PEI 4  $\odot$  82 / m<sup>2</sup>  
mat | matt



DARSE724  
PEI 4  $\odot$  78 / m<sup>2</sup>  
mat | matt  
tmavě šedá / dark grey / ciemnoszara  
темно-серый / sötétoszürke / gris oscuro



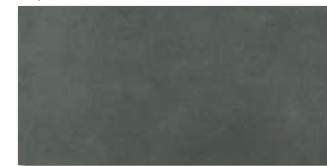
DAR63721  
PEI 4  $\odot$  82 / m<sup>2</sup>  
mat | matt



DARSE721  
PEI 4  $\odot$  78 / m<sup>2</sup>  
mat | matt  
hnědo-šedá / brown-grey / brązowoszara / коричневый-серый  
szürke-barna / gris-marrón



DAR63725  
PEI 4  $\odot$  82 / m<sup>2</sup>  
mat | matt



DARSE725  
PEI 4  $\odot$  78 / m<sup>2</sup>  
mat | matt  
černá / black / czarna / черный / fekete / negro



60x60



news



30x60



news



60x60



news



30x60



news



vyrobek / product



EN



dlašnice / floor tile  
dlašnice / floor tile

60x60  
30x60

598x598x10  
298x598x10

EN 14411:2016, annex G Bla GL  
EN 14411:2016, annex G Bla GL

3  
6

2,8  
5,6

1,08  
1,08

32  
40

34,56  
43,20

24,9  
23,2

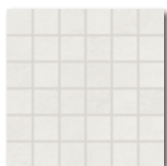
23,0  
21,5

820  
954

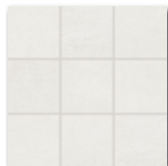


30x30  
10x10  
20x20  
30x30  
45x45

v2



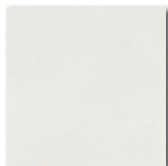
DDM06722 (SET)  
PEI 5  $\bigcirc$  72 / set  
mat | matt |  $\blacktriangle$  R10 |  $\blacktriangleright$  B |  $\blacktriangleright$  C |  $\blacktriangleright$  D



DAR12722  
PEI 5  $\bigcirc$  90 / m<sup>2</sup>  
mat | matt |  $\blacktriangle$  R10 |  $\blacktriangleright$  B |  $\blacktriangleright$  C |  $\blacktriangleright$  D



DAR26722  
PEI 5  $\bigcirc$  86 / m<sup>2</sup>  
mat | matt |  $\blacktriangle$  R9 |  $\blacktriangleright$  A |  $\blacktriangleright$  B

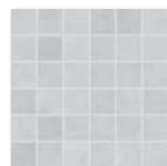


DAR34722  
PEI 5  $\bigcirc$  72 / m<sup>2</sup>  
mat | matt |  $\blacktriangle$  R9 |  $\blacktriangleright$  A



DAR44722  
PEI 5  $\bigcirc$  74 / m<sup>2</sup>  
mat | matt |  $\blacktriangle$  R9 |  $\blacktriangleright$  A |  $\blacktriangleright$  B

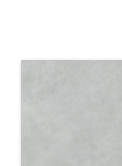
biela / white / biata / белый / fehér / blanco



DDM06723 (SET)  
PEI 4  $\bigcirc$  72 / set  
mat | matt |  $\blacktriangle$  R10 |  $\blacktriangleright$  B |  $\blacktriangleright$  C |  $\blacktriangleright$  D



DAR12723  
PEI 4  $\bigcirc$  90 / m<sup>2</sup>  
mat | matt |  $\blacktriangle$  R10 |  $\blacktriangleright$  B |  $\blacktriangleright$  C |  $\blacktriangleright$  D



DAR26723  
PEI 4  $\bigcirc$  86 / m<sup>2</sup>  
mat | matt |  $\blacktriangle$  R9 |  $\blacktriangleright$  A |  $\blacktriangleright$  B



DAR34723  
PEI 4  $\bigcirc$  72 / m<sup>2</sup>  
mat | matt |  $\blacktriangle$  R9 |  $\blacktriangleright$  A



DAR44723  
PEI 4  $\bigcirc$  74 / m<sup>2</sup>  
mat | matt |  $\blacktriangle$  R9 |  $\blacktriangleright$  A |  $\blacktriangleright$  B

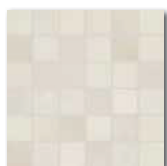
svetle šedá / light grey / jasnoszara  
светло-серый / világosszürke / gris claro



30x30  
10x10  
20x20  
30x30  
45x45

v2

news



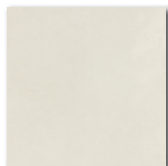
DDM06720 (SET)  
PEI 5  $\bigcirc$  72 / set  
mat | matt |  $\blacktriangle$  R10 |  $\blacktriangleright$  B |  $\blacktriangleright$  C |  $\blacktriangleright$  D



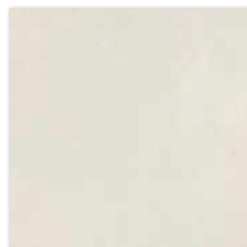
DAR12720  
PEI 5  $\bigcirc$  90 / m<sup>2</sup>  
mat | matt |  $\blacktriangle$  R10 |  $\blacktriangleright$  B |  $\blacktriangleright$  C |  $\blacktriangleright$  D



DAR26720  
PEI 5  $\bigcirc$  86 / m<sup>2</sup>  
mat | matt |  $\blacktriangle$  R9 |  $\blacktriangleright$  A |  $\blacktriangleright$  B

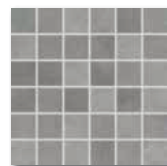


DAR34720  
PEI 5  $\bigcirc$  72 / m<sup>2</sup>  
mat | matt |  $\blacktriangle$  R9 |  $\blacktriangleright$  A



DAR44720  
PEI 5  $\bigcirc$  74 / m<sup>2</sup>  
mat | matt |  $\blacktriangle$  R9 |  $\blacktriangleright$  A |  $\blacktriangleright$  B

slonová kost / ivory / kość sloniowa / слоноvia кость  
elefántcsont / marfil



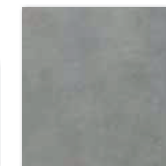
DDM06724 (SET)  
PEI 4  $\bigcirc$  72 / set  
mat | matt |  $\blacktriangle$  R10 |  $\blacktriangleright$  B |  $\blacktriangleright$  C |  $\blacktriangleright$  D



DAR12724  
PEI 4  $\bigcirc$  90 / m<sup>2</sup>  
mat | matt |  $\blacktriangle$  R10 |  $\blacktriangleright$  B |  $\blacktriangleright$  C |  $\blacktriangleright$  D



DAR26724  
PEI 4  $\bigcirc$  86 / m<sup>2</sup>  
mat | matt |  $\blacktriangle$  R9 |  $\blacktriangleright$  A |  $\blacktriangleright$  B



DAR34724  
PEI 4  $\bigcirc$  72 / m<sup>2</sup>  
mat | matt |  $\blacktriangle$  R9 |  $\blacktriangleright$  A



DAR44724  
PEI 4  $\bigcirc$  74 / m<sup>2</sup>  
mat | matt |  $\blacktriangle$  R9 |  $\blacktriangleright$  A |  $\blacktriangleright$  B

tmavé šedá / dark grey / ciemnoszara  
темно-серый / sötétszürke / gris oscuro



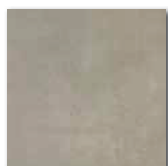
DDM06721 (SET)  
PEI 4  $\bigcirc$  72 / set  
mat | matt |  $\blacktriangle$  R10 |  $\blacktriangleright$  B |  $\blacktriangleright$  C |  $\blacktriangleright$  D



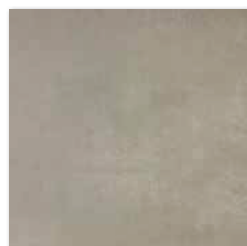
DAR12721  
PEI 4  $\bigcirc$  90 / m<sup>2</sup>  
mat | matt |  $\blacktriangle$  R10 |  $\blacktriangleright$  B |  $\blacktriangleright$  C |  $\blacktriangleright$  D



DAR26721  
PEI 4  $\bigcirc$  86 / m<sup>2</sup>  
mat | matt |  $\blacktriangle$  R9 |  $\blacktriangleright$  A |  $\blacktriangleright$  B

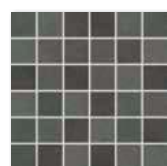


DAR34721  
PEI 4  $\bigcirc$  72 / m<sup>2</sup>  
mat | matt |  $\blacktriangle$  R9 |  $\blacktriangleright$  A



DAR44721  
PEI 4  $\bigcirc$  74 / m<sup>2</sup>  
mat | matt |  $\blacktriangle$  R9 |  $\blacktriangleright$  A |  $\blacktriangleright$  B

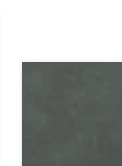
hnědo-šedá / brown-grey / brazowoszara / коричневый-серый  
szürke-barna / gris-marrón



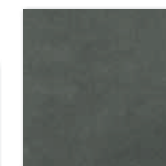
DDM06725 (SET)  
PEI 4  $\bigcirc$  72 / set  
mat | matt |  $\blacktriangle$  R10 |  $\blacktriangleright$  B |  $\blacktriangleright$  C |  $\blacktriangleright$  D



DAR12725  
PEI 4  $\bigcirc$  90 / m<sup>2</sup>  
mat | matt |  $\blacktriangle$  R10 |  $\blacktriangleright$  B |  $\blacktriangleright$  C |  $\blacktriangleright$  D



DAR26725  
PEI 4  $\bigcirc$  86 / m<sup>2</sup>  
mat | matt |  $\blacktriangle$  R9 |  $\blacktriangleright$  A |  $\blacktriangleright$  B



DAR34725  
PEI 4  $\bigcirc$  72 / m<sup>2</sup>  
mat | matt |  $\blacktriangle$  R9 |  $\blacktriangleright$  A



DAR44725  
PEI 4  $\bigcirc$  74 / m<sup>2</sup>  
mat | matt |  $\blacktriangle$  R9 |  $\blacktriangleright$  A |  $\blacktriangleright$  B

černá / black / czarna / черный / fekete / negro

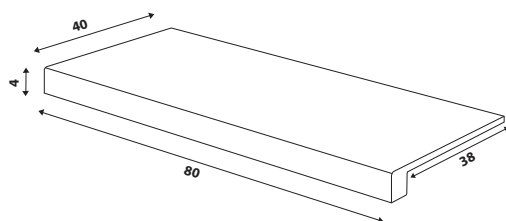
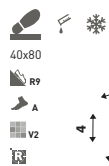
vyrobek / product



EN



moszika set 30x30 cm / mosaic sheet 30x30 cm	5x5	48x48x10	STO E. 030 - 049913	3	11	0,27	-	-	5,9	21,9	-
dlaťdice / floor tile	10x10	98x98x10	EN 14411:2016, annex G Bta GL	10	11	0,91	56	50,96	19,6	21,5	1 121
dlaťdice / floor tile	20x20	198x198x10	EN 14411:2016, annex G Bta GL	23	25	0,92	57	52,44	21,2	23,0	1 232
dlaťdice / floor tile	30x30	298x298x8	EN 14411:2016, annex G Bta GL	13	11	1,18	48	56,64	21,0	17,8	1 034
dlaťdice / floor tile	45x45	445x445x10	EN 14411:2016, annex G Bta GL	6	5	1,21	26	31,46	25,0	20,7	677



DCF84720\* slonová kost / ivory / kość słoniowa / слонобая кость / elefántcsont / marfil  
 DCF84721\* hnědo-šedá / brown-grey / brązowoszara / коричневый-серый / szürke-barna / gris-marrón  
 DCF84722\* bílá / white / biata / белый / fehér / blanco  
 DCF84723\* světle šedá / light grey / jasnoszara / светло-серый / világosszürke / gris claro  
 DCF84724\* tmavě šedá / dark grey / ciemnoszara / темно-серый / sötétszürke / gris oscuro  
 DCF84725\* černá / black / czarna / черный / fekete / negro  
 PEI 4-5 ○ 108 / ks  
 mat | matt

45x8,5



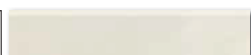
**DSAPM722**  
 ○ 56 / ks  
 mat | matt  
 bílá / white / biata / белый / fehér / blanco



**DSAPM721**  
 ○ 56 / ks  
 mat | matt  
 béžová / beige / beżowa / бежевый / bézs / beige



**DSAPM724**  
 ○ 56 / ks  
 mat | matt  
 tmavě šedá / dark grey / ciemnoszara / темно-серый / sötétszürke / gris oscuro



**DSAPM720**  
 ○ 56 / ks  
 mat | matt  
 slonová kost / ivory / kość słoniowa / слонобая кость / elefántcsont / marfil



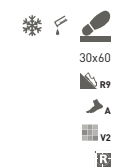
**DSAPM723**  
 ○ 56 / ks  
 mat | matt  
 světle šedá / light grey / jasnoszara / светло-серый / világosszürke / gris claro



**DSAPM725**  
 ○ 56 / ks  
 mat | matt  
 černá / black / czarna / черный / fekete / negro

výrobek / product	mm	mm	EN	mm	kg/m <sup>2</sup>	m <sup>2</sup>	kg	kg	kg	kg
schodová barokka / special step tile	40x80	398x798x10	STO č. 030 - 049916	2	-	-	-	-	-	-
sokl / skirting plinth	45x8,5	445x85x10	STO č. 030 - 049916	20	26,1	0,77	-	15,9	20,7	-
schodovka / step tile	30x60	298x598x10	STO č. 030 - 049916	6	5,6	1,08	40	23,2	21,5	-
sokl / skirting plinth	60x9,5	598x95x10	STO č. 030 - 049916	13	17,5	0,74	-	15,9	21,5	-

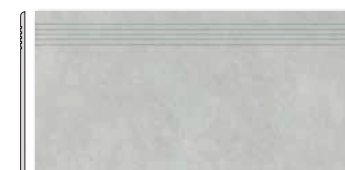
\* Výroba na objednávku | Production by order | Produkcja na zamówienie | Производство под заказ | Gyártás rendelésre | Producción bajo demanda



news



**DCPSE722**  
 PEI 5 ○ 72 / ks  
 mat | matt  
 bílá / white / biata / белый / fehér / blanco



**DCPSE723**  
 PEI 4 ○ 72 / ks  
 mat | matt  
 světle šedá / light grey / jasnoszara / светло-серый / világosszürke / gris claro



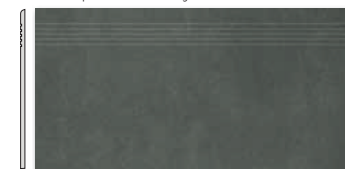
**DCPSE720**  
 PEI 5 ○ 72 / ks  
 mat | matt  
 slonová kost / ivory / kość słoniowa / слонобая кость / elefántcsont / marfil



**DCPSE724**  
 PEI 4 ○ 72 / ks  
 mat | matt  
 tmavě šedá / dark grey / ciemnoszara / темно-серый / sötétszürke / gris oscuro



**DCPSE721**  
 PEI 4 ○ 72 / ks  
 mat | matt  
 hnědo-šedá / brown-grey / brązowoszara / коричневый-серый / szürke-barna / gris-marrón



**DCPSE725**  
 PEI 4 ○ 72 / ks  
 mat | matt  
 černá / black / czarna / черный / fekete / negro



**DSAS4722**  
 ○ 58 / ks  
 mat | matt  
 bílá / white / biata / белый / fehér / blanco



**DSAS4723**  
 ○ 58 / ks  
 mat | matt  
 světle šedá / light grey / jasnoszara / светло-серый / világosszürke / gris claro



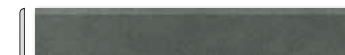
**DSAS4720**  
 ○ 58 / ks  
 mat | matt  
 slonová kost / ivory / kość słoniowa / слонобая кость / elefántcsont / marfil



**DSAS4724**  
 ○ 58 / ks  
 mat | matt  
 tmavě šedá / dark grey / ciemnoszara / темно-серый / sötétszürke / gris oscuro



**DSAS4721**  
 ○ 58 / ks  
 mat | matt  
 hnědo-šedá / brown-grey / brązowoszara / коричневый-серый / szürke-barna / gris-marrón



**DSAS4725**  
 ○ 58 / ks  
 mat | matt  
 černá / black / czarna / черный / fekete / negro

60x9,5



news